



**Fitzgerald**

**Life**  
SCIENCE

北京来福赛思科技有限公司

BeiJing Life Science Technology Co.,Ltd

## Matched-Pair Components and Related Products

Adrenal and Pancreatic

Cardiac Markers

Drugs of Abuse/TDM

Fertility/Pregnancy

Hormones

Infectious Disease

Miscellaneous

Steroids

Thyroid Products

Tumor Markers

Animal Serum & Red Blood Cells

Blocking Reagents

Diluents

Poly-HRP Products

北京市昌平区回龙观西大街35号院1号楼811室 102208

Tel: +86 10 5701 7625 / 5701 8690 / 5701 8691

MP: +86 136 4103 4192 / 156 1198 2246

FAX: +86 10 5645 1610

Mail: info@bj-life-science.com

www.bj-life-science.com

**www.fitzgerald-fii.com**



## Adrenal and Pancreatic

Capture Antibody/Antigen	Clone #	Catalog #	Detection Antibody	Clone #	Catalog #	Comments, Assay Type
C Peptide mAb	M8120921	10-C65B	C Peptide mAb	M8120922	10-C65C	Suitable for C Peptide & Proinsulin detection in ELISA
C Peptide mAb	M607239	10-C65A				Immunogen is C Peptide of Proinsulin
C Peptide pAb		20-CP10T				Specific for human C Peptide
C Peptide protein		30-AC95				>97% by HPLC
Cortisol pAb		20-CR50				15,000 test /ml in 125I, RIA; ED50 = 70ng/ml @ 67.7% B/TC
Cortisol mAb	M021509	10-C30D	Cortisol 3 CMO-HRP		65-IC08	ELISA
Cortisol 3 CMO-HRP		65-IC08				Precursor: Cortisol-3-CMO
Cortisol protein		30-AC19				>98% by HPLC
Cortisol 3-BSA		80-IC20				Immunogen grade
Glucagon pAb		20-GR20				15,000 test/ml by 125I RIA; ED50 = 650 pg/ml @ 41% B/TC
Hemoglobin mAb	M1202099	10-3144	Hemoglobin mAb	M1202100	10-3145	Suitable pairing for Lateral Flow. Can also be used in ELISA
Hemoglobin mAb	M4020514	10-H03C	Hemoglobin mAb	M4020515	10-H03D	Suitable for fecal occult blood (FOB) test
Hemoglobin mAb	M8121534	10-H03F	Hemoglobin mAb	M8121533	10-H03G	Suitable for direct sandwich ELISA
Hemoglobin mAb	M4020516	10-H03E				Total Hemoglobin
Hemoglobin A1c mAb	M8121531	10-H03H	Hemoglobin A1c mAb	M8121532	10-H12C	Recommended for ELISA
Hemoglobin A1c mAb	M0501129	10-H12B				Reacts with all variants of A1c and S1c, recommended for ELISA
Hemoglobin A1c mAb	M7010221	10-H12A				No cross reactivity with HbA1o, suitable for immunoassays
Hemoglobin A1c protein		30R-AH012X				>96 % by FPLC
Hemoglobin A1c protein		30-AH31				>98% by HPLC
Hemoglobin A0 protein		30-AH32				>98% by HPLC
Hemoglobin Epsilon Chain mAb	0900-50	10C-CR8008M1				Hemoglobin Gower-I (a2e2) isolated from K562 cell culture
Hemoglobin Gamma Chain mAb	700-50	10C-CR8115M1				Specific for gamma chain of Hb F and Hb Barts, suitable for ELISA
Insulin mAb	M322213	10-I30B	Insulin mAb	M322214	10-I30C	Recommended for ELISA & IHC on frozen sections
Insulin mAb	M708011	10-I30D	Insulin mAb	M322214	10-I30C	Suitable for two site immunoassay
Insulin mAb	M705217	10-I30E	Insulin mAb	M705218	10-I30F	Suitable for two site immunoassay
Insulin mAb	M12619IN2	10-I134C	Insulin mAb	M12619IN4	10-I134A	For use in two-site enzyme immunoassay
Insulin mAb	M12619IN1	10-I134D	Insulin mAb	M12619IN3	10-I134B	For use in two-site enzyme immunoassay
Insulin pAb		20-IP35				Porcine Insulin 100%, also highly reactive to human Insulin
Insulin protein		30-AI51				>99% by HPLC
Insulin+Proinsulin mAb	M322215	10-I34A	Insulin+Proinsulin mAb	M322216	10-I34B	Recommended for two-site enzyme immunoassay
Insulin+Proinsulin mAb	M12619INP2	10-I136A	Insulin+Proinsulin mAb	M12619INP1	10-I136B	For use in two-site enzyme immunoassay
Proinsulin mAb	M32237	10-P14B	Proinsulin mAb	M708011	10-I30D	Recommended for sandwich immunoassay
Proinsulin mAb	M32237	10-P14B	Proinsulin mAb	M322213	10-I30B	Recommended for sandwich immunoassay
Proinsulin mAb	M32238	10-P14A				Suitable for IHC on frozen sections
Proinsulin mAb	M12619PI1	10-P141D	Insulin mAb	M18612LP1	10-7820	For use in sandwich immunoassay
Proinsulin mAb	M12619PI2	10-P141A	Insulin mAb	M12619IN2	10-I134C	For use in two-site enzyme immunoassay
RBP4 mAb	M18612RB1	10-7955	RBP4 mAb	M18612RB2	10-7956	For use in sandwich immunoassay
RBP4 mAb	M18612RB3	10-7957	RBP4 mAb	M18612RB4	10-7958	For use in sandwich immunoassay
TAFI mAb	M18612TA1	10-7968	TAFI mAb	M18612TA2	10-7969	For use in sandwich immunoassay
TAFI mAb	M18612TA1	10-7968	TAFI mAb	M18612TA3	10-7970	For use in sandwich immunoassay

■ Matched Pairs

\* Can be used as capture and detection antibody



Capture Antibody/Antigen	Clone #	Catalog #	Detection Antibody	Clone #	Catalog #	Comments, Assay Type
BNP mAb	M18612BN1	10-7879	BNP mAb	M18612BN2	10-7880	For use in sandwich immunoassay
BNP mAb	M18612BN1	10-7879	BNP mAb	M18612BN3	10-7881	For use in sandwich immunoassay
CKMB mAb	M9910207	10-C40A	CKMM pAb		70-XG47	No crossreactivity with CK-BB or CK-MM
CKMB mAb	M9910208	10-C40B	CKMM pAb		70-XG47	No crossreactivity with CK-BB or CK-MM
CKBB pAb		20-CG72				Multiple lots available, varying titers
CKBB pAb		20-CR72				Suitable for EIA and RIA assay method, sensitive to ng/ml
CKMM pAb		20-CG75				Excellent antibody for EIA applications
CKMM pAb		20-CR75				Recommended for western blot at a 1:200 dilution
CKMB protein		30-AC65				>99% CK-MB Isoform
CKMB protein		30-AC66				>90% CK-MB Isoform
CRP mAb	M701289	10-C33A	CRP mAb	M701288	10-C33C	Specific for C-RP only
CRP mAb	M18612CRP1	10-7893	CRP mAb	M18612CRP2	10-7894	For use in sandwich immunoassay
CRP mAb	M12619CR1	10-C189B	CRP mAb	M12619CR2	10-C189A	For use in sandwich immunoassay
CRP pAb		20-CG15				MonoSpecific for C-RP by IEP
CRP protein		30-AC05				>99% by SDS-PAGE
CRP protein		30C-CP1000U				>98% by SDS-PAGE
CRP protein		30-AC07				Single band at 23 kD by SDS-PAGE
CRP protein		30-AC10				>80% by SDS-PAGE
CRP calibrator		35-CC30				>20 mg/dL by Turbidimetric assay
Cystatin C mAb	M18612CC1	10-7884	Cystatin C mAb	M18612CC2	10-7885	For use in sandwich immunoassay
Cystatin C mAb	M18612CC3	10-7886	Cystatin C mAb	M18612CC4	10-7887	For use in sandwich immunoassay
D-Dimer mAb	M01102704	10-D42B	D-Dimer mAb	M01102703	10-D42A	No crossreactivity with D-monomer or Fibrinogen
D-Dimer mAb	M12619DD	10-D100A	D-Dimer mAb	M18612DD	10-7900	For use in sandwich immunoassay
D-Dimer protein		30R-AD001				>90% by SDS-PAGE
D-Dimer protein		30-AD41				ELISA grade
FABP mAb	M79189	10-F14B	FABP mAb	M79188	10-F14A	Specifc for Fatty Acid Binding Protein
FABP mAb	M18612FB1	10-7904	FABP mAb	M18612FB2	10-7905	For use in sandwich immunoassay
FABP mAb	M12619FA1	10-F104B	FABP mAb	M12619FA2	10-F104A	For use in sandwich immunoassay
FABP protein		30-AF14				>98 % by SDS-PAGE
FABP protein		30C-CP2049				>95% by SDS-PAGE
GPBB mAb	M18612GP1	10-7908	GPBB mAb	M18612GP2	10-7909	For use in sandwich immunoassay
GPBB mAb	M18612GP2	10-7909	GPBB mAb	M12619GP	10-G110A	For use in sandwich immunoassay
Myeloperoxidase mAb	M05011921	10-M92C	Myeloperoxidase mAb	M05011922	10-M92D	Reactive to human Myeloperoxidase
Myeloperoxidase mAb	M6032221	10-M92A				Suitable in ELISA applications
Myeloperoxidase mAb	M01102822	10-M92B				Suitable in ELISA applications
Myeloperoxidase mAb	M18612MY1	10-7932	Myeloperoxidase mAb	M18612MY2	10-7933	For use in sandwich immunoassay
Myeloperoxidase mAb	M18612MY1	10-7932	Myeloperoxidase mAb	M18612MY3	10-7934	For use in sandwich immunoassay
Myeloperoxidase protein		30-AM92				98% by SDS-PAGE
Myeloperoxidase protein		30R-AM031				>95 % by SDS-PAGE

■ Matched Pairs

\* Can be used as capture and detection antibody

## Cardiac Markers

Capture Antibody/Antigen	Clone #	Catalog #	Detection Antibody	Clone #	Catalog #	Comments, Assay Type
Myoglobin mAb	M0110519	10-M50C	Myoglobin mAb	M0110520	10-M50D	Human cardiac Myoglobin immunoassay
Myoglobin mAb	M9983110	10-M50A	Myoglobin mAb	M012607	10-M50B	Human cardiac Myoglobin immunoassay
Myoglobin mAb	M12619MY1	10-M158A	Myoglobin mAb	M12619MY2	10-M158B	Excellent pair for ELISA
Myoglobin protein		30-AM20				>97% pure by SDS-PAGE
Myoglobin protein		30-AM21				~50% by SDS-PAGE
Myoglobin pAb		70-MG60				Specific for human Myoglobin by IEP
PAPPA mAb	M18612PP1	10-7951	PAPPA mAb	M18612PP2	10-7952	For use in sandwich immunoassay
PAPPA mAb	M18612PP3	10-7953	PAPPA mAb	M18612PP4	10-7954	For use in sandwich immunoassay
SAA mAb	M18612SA1	10-7959	SAA mAb	M18612SA2	10-7960	For use in sandwich immunoassay
Troponin C mAb (Cardiac)	M5092922	10-T78A	Troponin C mAb (Cardiac)	M805121	10-T78B	Quantitative sandwich immunoassay
Troponin C mAb (Cardiac)	M12619TC1	10-T122B	Troponin C mAb (Cardiac)	M12619TC2	10-T122A	For use in sandwich immunoassay
Troponin C protein (Cardiac)		30-AT44				>98% pure by SDS-PAGE
Troponin C protein		30-AT64				>98% pure by SDS-PAGE
Troponin I mAb	M18612TI2	10-7966	Troponin I mAb	M18612TI3	10-7967	For use in sandwich immunoassay
Troponin I mAb	M18612TI1	10-7965	Troponin I mAb	M12619TI3	10-T123H	For use in sandwich immunoassay
Troponin I mAb (Cardiac)	M709308	10-T99B	Troponin I mAb (Cardiac)	M709309	10-T99A	Sensitive to 0.1 ng/ml by ELISA
Troponin I mAb (Cardiac)	M8010521	10-T79A	Troponin I mAb (Cardiac)	M8010509	10-T79B	Lateral Flow
Troponin I mAb (Cardiac)	M8010521	10-T79A	Troponin I mAb (Cardiac)			(2:2:1 mix) 10-T79A, 10-T79D, 10-T79E
Troponin I mAb (Cardiac)	M0110609	10-T79D	Troponin I mAb (Cardiac)			(2:2:1 mix) 10-T79A, 10-T79D, 10-T79E
Troponin I mAb (Cardiac)	M0110510	10-T79E	Troponin I mAb (Cardiac)			(2:2:1 mix) 10-T79A, 10-T79D, 10-T79E
Troponin I mAb (Cardiac)	M805141	10-T79F	Troponin I mAb (Cardiac)	M805142	10-T79C	Sensitive to 0.1 ng/ml by ELISA
Troponin I mAb (Cardiac)	M805142	10-T79C	Troponin I mAb (Cardiac)	M8030409	10-T79J	Quantitative sandwich immunoassay
Troponin I mAb (Cardiac)	M9011521	10-T79H	Troponin I mAb (Cardiac)	M805142	10-T79C	Quantitative sandwich immunoassay
Troponin I mAb (Cardiac)	9127435	10C-CR4036M6	Troponin I mAb	8127435	10C-CR4036M5	Specific for cardiac Troponin I
Troponin I mAb (Skeletal Muscle)	M12619TI1	10-T126B	Troponin I mAb (Skeletal Muscle)	M12619TI2	10-T126A	For use in sandwich immunoassay
Troponin I protein		30-AT43				>98% by SDS-PAGE
Troponin I protein		30-AT63				>96% by SDS-PAGE
Troponin I protein		30R-AT034				0.1-5% of the total protein is Troponin I
Troponin I protein (Cardiac)		30-AT49				>95% by SDS-PAGE
Troponin I Free Serum		90R-106				Pooled normal human serum
Troponin I pAb		70C-CR4036GAP				Specific for cardiac Troponin I
Troponin T mAb	M40283	10-T85B	Troponin T mAb (Cardiac)	M40284	10-T85E	Quantitative sandwich immunoassay
Troponin T mAb	M40283	10-T85B	Troponin T mAb (Cardiac)	M608299	10-T85F	Quantitative sandwich immunoassay
Troponin T mAb	M322512	10-T85A	Troponin T mAb (Cardiac)	M40283	10-T85B	Quantitative sandwich immunoassay
Troponin T mAb	M322512	10-T85A	Troponin T mAb (Cardiac)	M40284	10-T85E	Quantitative sandwich immunoassay
Troponin T mAb	M322512	10-T85A	Troponin T mAb (Cardiac)	M401134	10-T85C	Quantitative sandwich immunoassay
Troponin T mAb	M12619TT1	10-T127D	Troponin T mAb	M12619TT4	10-T127F	For use in sandwich immunoassay
Troponin T mAb	M12619TT3	10-T127B	Troponin T mAb	M12619TT2	10-T127G	For use in sandwich immunoassay
Troponin T protein		30-AT38				>98% pure by SDS-PAGE

■ Matched Pairs

\* Can be used as capture and detection antibody

## Drugs of Abuse /TDM

Capture Antibody/Antigen	Catalog #	Detection Antibody	Clone #	Catalog #	Comments, Assay Type
Amphetamine-BSA	80-IA22	Amphetamine mAb	M994299	10-A44C	Lateral/Gold Conjugation
Amphetamine-BSA	80-IA23	Amphetamine mAb	M8122021	10-A44F	Lateral/Gold Conjugation
Amphetamine-BSA	80-IA24	Amphetamine mAb	M610256	10-A44E	AMP Urine Test
Amphetamine-BSA	80-IA22	Amphetamine mAb	M8122021	10-A44F	Lateral/Gold Conjugation
Barbiturate-BSA	80-IB20	Barbiturate mAb	M0032721	10-B08A	Lateral/Gold Conjugation
Barbiturate-BSA	80-IB21	Barbiturate mAb	M610258	10-B08B	Urine BAR Test
Benzodiazepine-BSA	80-IB40	Benzodiazepine mAb	M998501	10-B12A	Lateral/Gold Conjugation
Benzodiazepine-BSA	80-IB42	Benzodiazepine mAb	M610255	10-B12B	BZO Urine Test, Lateral/Gold Conjugation
Benzodiazepine-BSA	80-IB42	Benzodiazepine pAb		20-BS13	BZO Urine Test, Lateral/Gold Conjugation
Benzoyllecgonine-BSA	80-IB29	Benzoyllecgonine mAb	M731105	10-B11D	Lateral/Gold Conjugation
Benzoyllecgonine-BSA	80-IB31	Benzoyllecgonine mAb	M8122022	10-B11G	Saliva Test
Benzoyllecgonine-BSA	80-IB31	Benzoyllecgonine mAb	M731105	10-B11D	Lateral/Gold Conjugation
Benzoyllecgonine-BTG	80-IB32	Benzoyllecgonine mAb	M6091221	10-B11E	COC Urine Test, Cross to COC
Benzoyllecgonine-BTG	80-IB32	Benzoyllecgonine mAb	M6101820	10-B11F	COC Urine Test, Cross to COC
Buprenorphine-BSA	80-1035	Buprenorphine mAb	M120511	10-1031	Excellent pair for rapid test
Cocaine-BSA	80-1034	Cocaine mAb	M120510	10-1030	Excellent pair for rapid test
Digoxin pAb	20-DG10				High titer antibody, 10 liter sizes available as neat serum
Digoxin pAb	20-DR10				Suitable for ELISA, RIA and WB
Dilantin pAb	20-DR15				Suitable for ELISA, IF and RIA
Furosemide pAb	20-FR85				~60,000 tests/ml by EIA
Haloperidol pAb	20-HR19				1 : 5,000 by ELISA
Methadone-BSA	80-IM40	Methadone mAb	M999921	10-M01A	Lateral/Gold Conjugation
Methadone-BSA	80-IM56	Methadone mAb	M610245	10-M01B	MTD Urine Test
Methadone-BSA	80-IM55	Methadone mAb	M081030	10-M01C	Lateral/Gold Conjugation
Methamphetamine-BSA	80-IM54	Methamphetamine mAb	M9942911	10-M25B	Lateral/Gold Conjugation
Methamphetamine-BSA	80-IM54	Methamphetamine mAb	M352009	10-M25C	Lateral/Gold Conjugation
Methamphetamine-BSA	80-IM59	Methamphetamine mAb	M610244	10-M25D	M-AMP Urine Test
Methamphetamine-BSA	80-IM59	Methamphetamine mAb	M610252	10-M25E	M-AMP Urine Test
MDMA-BSA	80-1033	MDMA mAb	M120509	10-1029	Excellent pair for rapid test
MDMA-BTG	80-IM03	MDMA mAb	M4020517	10-M03A	Ecstasy/MDMA Urine Test
Morphine 3 pAb	20-MG05				1:500,000 in 3H Radioimmunoassay
Morphine 6 aAb	20-MG07				1:100,000 in 3H Radioimmunoassay
Morphine-BSA	80-IM50	Morphine mAb	M9942910	10-M18A	Lateral/Gold Conjugation
Morphine-BSA	80-IM50	Morphine mAb	M351909	10-M18C	Lateral/Gold Conjugation
Morphine-BSA	80-IM52	Morphine mAb	M9942910	10-M18A	Lateral/Gold Conjugation
Morphine-BSA	80-IM52	Morphine mAb	M351909	10-M18C	Lateral/Gold Conjugation

■ Matched Pairs

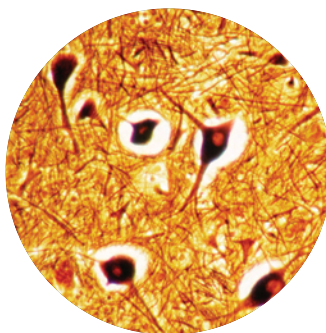
\* Can be used as capture and detection antibody

## Drugs of Abuse /TDM

Capture Antibody/Antigen	Catalog #	Detection Antibody	Clone #	Catalog #	Comments, Assay Type
Morphine-BSA	80-IM52	Morphine mAb	M351908	10-M18D	Lateral/Gold Conjugation
Morphine-BSA	80-IM53	Morphine mAb	M9942910	10-M18A	Lateral/Gold Conjugation
Morphine-BTG	80-IM60	Morphine mAb	M610242	10-M18E	MOR Urine Test
Morphine-BTG	80-IM60	Morphine mAb	M911401	10-M18J	MOR Urine Test
Morphine-BTG	80-IM60	Morphine mAb	M911402	10-M18K	MOR Urine Test
Morphine-BTG	80-IM60	Morphine + Oxycodone mAb	M610251	10-M18G	Detects both MOR and OXY in the Urine Test
Morphine-BTG	80-IM60	Morphine + Oxycodone mAb	M610243	10-M18H	Detects both MOR and OXY in the Urine Test
Oxycodone-BSA	80-IO18	Oxycodone mAb	M610246	10-018A	OXY Urine Test
Oxycodone-BSA	80-IO18	Oxycodone mAb	M610254	10-018C	OXY Urine Test
Phencyclidine-BSA	80-IP10	Phencyclidine mAb	M9903239	10-P73B	Lateral/Gold Conjugation
Phencyclidine-BSA	80-IP13	Phencyclidine mAb	M610253	10-P73C	PCP Urine Test
Tricyclic Antidepressant-BSA	80-IT68	Tricyclic Antidepressants mAb	M9910206	10-T55A	Lateral/Gold Conjugation
Tricyclic Antidepressant-BSA	80-IT69	Tricyclic Antidepressants mAb	M610257	10-T55B	TCA Urine Test, Automation System
THC-BSA	80-IT61	THC mAb	M410277	10-T43B	Lateral/Gold Conjugation
THC-BSA	80-IT62	THC mAb	M410277	10-T43B	Lateral/Gold Conjugation
THC-BSA	80-IT62	THC mAb	M8122023	10-T43G	Lateral/Gold Conjugation
THC-BSA	80-IT63	THC mAb	M4020411	10-T43E	THC Urine Test
Theophylline 8 pAb	20-TR158				500,000 tests /ml in 125I RIA

■ Matched Pairs

\* Can be used as capture and detection antibody



Nerve cells in brain stem

## Fertility/Pregnancy

Capture Antibody/Antigen	Clone #	Catalog #	Detection Antibody	Clone #	Catalog #	Comments, Assay Type
Estrogen pAb		20-ER14				Well characterized antibody, sensitive to 5 pg by RIA
FSH mAb	M607109	10-F15D	FSH beta mAb	M94167	10-F25A	Very good pair for ELISA
FSH mAb	M94167	10-F25A	FSH beta mAb	M94170	10-F25C	Very good pair for ELISA
FSH mAb	M18612FSH1	10-7978	FSH mAb	M18612FSH2	10-7979	Excellent pair for ELISA
FSH pAb		20-FR10				Many excellent lots available. Some titers as high as 1/75,000.
FSH pAb		20-FR11				Suitable in RIA using an I125 tracer and IHC techniques
FSH protein		30-AF45				>98% by SDS-PAGE analysis
FSH Intact protein		30-AF35				>60% by SDS-PAGE analysis
FSH Intact protein		30-AF30				>98% by SDS-PAGE analysis
hCG mAb	M94138	10-C25D	hCG beta mAb	M94139.7	10-C25E	Best pair for a rapid test
hCG alpha pAb		70-XG35	hCG beta mAb	M705159	10-C25C	Good pair for rapid test and ELISA
hCG mAb	M94138	10-C25D	hCG beta mAb	M94140	10-C25B	Very good pair for ELISA
hCG mAb	M1202082	10-3127	hCG mAb	M1202081	10-3126	Suitable pairing for Lateral Flow
hCG mAb	M1202081	10-3126	hCG mAb	M1202082	10-3127	Suitable pairing for ELISA
hCG mAb	M18612HC1	10-7980	hCG mAb	M18612HC2	10-7981	Excellent pair for ELISA
hCG pAb		20-CR25				110,000 tests per ml in 125I RIA
hCG alpha pAb		20-CR30				1: 350,000 by ELISA
hCG beta pAb		20-CG35				Highly specific and sensitive to hCG. Liter quantities available
hCG beta pAb		20-CR35				Highly specific and sensitive to hCG. Large quantities available
hCG beta protein		30-AC50				>98% pure by SDS-PAGE analysis
hCG protein		30-AC85				Crude, excellent for spiking controls and calibrator preparation
hCG protein		30R-AC048				>95% pure by SDS-PAGE analysis
Lactoferrin mAb	M12619LC3	10-L100A	Lactoferrin mAb	M12619LC1	10-L100B	For use in sandwich immunoassay
Lactoferrin mAb	M12619LC3	10-L100A	Lactoferrin mAb	M12619LC2	10-L100C	For use in sandwich immunoassay
LH mAb	M21241	10-L05A	LH mAb	M21301	10-L05B	Very good pair for ELISA
LH mAb	M94186	10-L15A	LH mAb	M94187	10-L15B	Very good pair for ELISA
LH pAb		20-LG05				Highly specific for LH. Suitable for EIA and RIA
LH pAb		20-LR05				Low cross-reactivity with FSH, HCG, HCGb, and TSH
LH pAb		20-LR06				Multiple lots available, varying titers
LH beta mAb	M18612LH1	10-7823	LH beta mAb	M18612LH2	10-7824	For use in sandwich immunoassay
LH beta protein		30-AL35				> 98% by SDS-PAGE analysis
LH Intact protein		30C-CP1018U-1				> 98% by SDS-PAGE analysis
LH Intact protein		30-AL25				>60% by SDS-PAGE analysis
Placental Lactogen pAb		20-HR70				hPL 100%, hCG <0.1%, FSH <0.1%
Prolactin mAb	M94194	10-P15C	Prolactin mAb	M94193	10-P15B	Very good pair for ELISA
Prolactin pAb		20-PR25				Multiple lots available, varying titers
Prolactin protein		30-AP05				>98% pure by SDS-PAGE analysis
Prolactin protein		30-AP10				>60% pure by SDS-PAGE analysis
Prolactin protein		30R-AP018				>98% pure by SDS-PAGE; E. coli expressed
SHBG protein		30-AS40				>98% pure by SDS-PAGE analysis
SHBG protein		30C-CP2020P				> 50% pure by SDS-PAGE analysis; Excellent for spiking controls

■ Matched Pairs

\* Can be used as capture and detection antibody



## Hormones

Capture Antibody/Antigen	Clone #	Catalog #	Detection Antibody	Clone #	Catalog #	Comments, Assay Type
Adiponectin mAb	M18612AD1	10-7815	Adiponectin mAb	M18612AD2	10-7816	Excellent pair for ELISA
Adiponectin mAb	M18612AD3	10-7817	Adiponectin mAb	M18612AD4	10-7818	For med/high MW adiponectin immunodetection
Adiponectin mAb	M18612AD2	10-7816	Adiponectin mAb	M18612AD5	10-7819	For low MW adiponectin immunodetection
Calcitonin mAb	M18612CT1	10-7891	Calcitonin mAb	M18612CT2	10-7892	For use in sandwich immunoassay
Erythropoietin mAb	M18612EP1	10-7901	Erythropoietin mAb	M18612EP2	10-7902	For use in sandwich immunoassay
Erythropoietin mAb	M12619EP2	10-E115A	Erythropoietin mAb	M12619EP1	10-E115B	For use in sandwich immunoassay
hGH mAb	M0410181	10-G05C	hGH mAb	M0410182	10-G05D	Suitable for EIA, immunoblotting
hGH mAb	M94168	10-G05A				Suitable for EIA & RIA
hGH mAb	M94169	10-G05B				Suitable for EIA & RIA
hGH mAb	M12619GH2	10-G119A	hGH mAb	M12619GH1	10-G119B	For use in sandwich immunoassay
hGH pAb		20-GR10				150,000 tests per ml by RIA
hGH protein		30-AH05				>98% by SDS-PAGE
hGH protein		30-AH06				>60% by SDS-PAGE
hGH protein		30R-AG020				E. Coli expressed, >98% Pure by SDS-PAGE
Leptin mAb	M18612LP1	10-7820	Leptin mAb	M18612LP2	10-7821	For use in sandwich immunoassay
Leptin mAb	M18612LP1	10-7820	Leptin mAb	M18612LP3	10-7822	For use in sandwich immunoassay
Osteocalcin mAb	M186120S1	10-7939	Osteocalcin mAb	M186120S2	10-7940	Excellent pair for ELISA
Procalcitonin mAb	M18612PC1	10-7941	Procalcitonin mAb	M18612PC2	10-7942	For use in sandwich immunoassay
Procalcitonin mAb	M18612PC3	10-7943	Procalcitonin mAb	M18612PC4	10-7944	For use in sandwich immunoassay
PTH mAb	M01102410	10-P55A				Suitable in EIA and IHC applications
PTH pAb		20-PG11				5,500 tests per ml by RIA C-terminal tracer, DAB
PTH pAb		20-PR11				~20,000 tests per ml by RIA
PTH pAb		20-PG01				Multiple Lots available, varying titers
PTH pAb		20-PR01				~20,000 tests per ml in RIA
PTH pAb		20-PG10				~12,000 tests/ml by RIA
PTH pAb		20-PR10				~20,000 tests/ml by RIA
PTH mAb	M01102409	10-P50C				Suitable in EIA and IHC applications.
PTH pAb		20-PG09				~7,000 tests/ml by RIA
PTH pAb		20-PR13				~20,000 tests/ml by RIA, high affinity for human & bovine PTH
PTH pAb		20-PG13				~15,000 tests/ml by RIA, highly specific for bovine & human PTH
PTH mAb	M01081	10-P03A				Provided as ascites, high affinity for Mid Region PTH
PTH pAb		20-PG08				~20,000 tests per ml by RIA Mid-molecule tracer, DAB
PTH pAb		20-PR08				~20,000 tests per ml by RIA Mid-molecule tracer, DAB

■ Matched Pairs

\* Can be used as capture and detection antibody

Capture Antibody/Antigen	Clone #	Catalog #	Detection Antibody	Clone #	Catalog #	Comments, Assay Type
Adenovirus mAb	M1202102	10-3147	Adenovirus mAb	M1202102	10-3147	Can be used as both membrane coating and detection antibody
Adenovirus mAb	M1121801	10-A02A	Adenovirus mAb	M8121121	10-A02F	Specific for Adenovirus. Suitable for IFA, IHC and ELISA
Adenovirus mAb	M1121801	10-A02A	Adenovirus mAb	M8121123	10-A02H	Specific for Adenovirus. Suitable for IFA, IHC and ELISA
Adenovirus mAb	M0111149	10-A02C	Adenovirus mAb	M011148	10-A02D	Specific for the hexon group antigen of Adenovirus
Adenovirus mAb	M8121121	10-A02F	Adenovirus mAb	M1121801	10-A02A	Specific for hexon group of Adenovirus. Suitable for IFA & ELISA
Adenovirus mAb	M8121122	10-A02G	Adenovirus mAb	M8121121	10-A02F	Specific for hexon group of Adenovirus. Suitable for IFA & ELISA
Adenovirus mAb	M8121122	10-A02G	Adenovirus mAb	M8121123	10-A02H	Specific for hexon group of Adenovirus. Suitable for IFA & ELISA
Adenovirus pAb		20-AG02				Specific for purified Hexon
Adenovirus protein		30-AA02				ELISA grade antigen
Adenovirus protein		30R-AA006				Produced by HeLa cells inoculated with adenovirus type 6
Adenovirus mAb	M901221	10-A80A				Suitable for IFA, IHC and ELISA applications
B. anthracis mAb	M18612BA1	10-7841	B. anthracis mAb	M18612BA2	10-7842	Lethal Factor specific. Excellent pair for ELISA
B. anthracis mAb	M12619BA3	10-B107B	B. anthracis mAb	M12619BA4	10-B107A	Lethal Factor specific. Excellent pair for ELISA
B. anthracis mAb	M12619BA1	10-B106F	B. anthracis mAb	M12619BA2	10-B106B	Protective antigen specific. Excellent pair for ELISA
B. anthracis mAb	M12619BA5	10-B108A	B. anthracis mAb	M12619BA6	10-B108B	Specific for spore. Excellent pair for ELISA
Brucella abortus mAb	M120502	10-1033	Brucella abortus mAb	M120501	10-1034	Excellent pair for ELISA
Canine Distemper Virus mAb	M18612CD1	10-7850	Canine Distemper Virus mAb	M18612CD2	10-7851	Excellent pair for ELISA
C. trachomatis mAb	M4020310	10-C13A	C. trachomatis mAb	M4020311	10-C13B	Suitable for lateral flow immunoassays
C. trachomatis mAb	M2103128	10-C13C	C. trachomatis pAb		20-CG21	Specific for purified elementary bodies. Suitable for ELISA & IFA
C. trachomatis mAb	M4091317	10-C13D				Detects trachomatis, psittaci & pneumoniae. Suitable for IFA/DFA
C. trachomatis pAb		20-CG20				Specific to the Major Outer Membrane Protein (MOMP)
C. trachomatis pAb		20-CR19				Reacts with C. trachomatis, C. psittacii and C. pneumoniae
C. trachomatis pAb		20-CG21				Specific to Elementary bodies of all strains of C. trachomatis
C. trachomatis protein		30-AC37				Specific for C. trachomatis type F strain
C. pneumoniae mAb	M73066	10-C27A				Specific for C. pneumoniae (TWAR). Suitable for ELISA, IFA, IHC, WB
C. Botulinum A Toxoid mAb	M12619CA1	10-C130B	C. Botulinum A Toxoid mAb		M12619CA2	10-C130A Excellent pair for ELISA
C. Botulinum B Toxoid mAb	M18612CB	10-7843	C. Botulinum B Toxoid mAb		M12619CB	10-C131A Excellent pair for ELISA
C. Botulinum E Toxoid mAb	M18612ET1	10-7848	C. Botulinum E Toxoid mAb		M18612ET2	10-7849 Excellent pair for ELISA
CMV mAb	M4091309	10-C50L				Reactive against intermediate early antigen. Suitable for IFA/DFA
CMV mAb	M4091310	10-C50M				Reactive against intermediate early antigen. Suitable for IFA/DFA
CMV mAb	M4091311	10-C50N				Reactive against intermediate early antigen. Suitable for IFA/DFA
CMV pAb		20-CG70				Predominant reactivity to gB. Suitable for IFA, IHC & WB
CMV protein		30-AC75				Suitable for ELISA (Indirect) and WB
CMV antibody (HRP)		65-IC15				HRP conjugated antigen suitable for CMV IgM indirect assay
Diphtheria toxin mAb	M12619DT1	10-D113B	Diphtheria toxin mAb	M12619DT2	10-D113A	For use in sandwich immunoassay
*E. coli O157 mAb	M7030621	10-E13A	E. coli O157 mAb	M7030621	10-E13A	Suitable for agglutination & solid-phase immunoassay
E. coli O157 mAb	M7030621	10-E13A	E. coli pAb		20-ER13	Suitable for agglutination & solid-phase immunoassay
E. coli O157:H7 cell protein		30-AE13				Approximately 7.91 x 10 <sup>9</sup> cfu/ml
E. coli pAb		20-ER13				Reactive with all O and K antigenic serotypes of E. Coli
Feline Leukemia Virus mAb	M510601	10-F05A				Recognizes all FeLV isolates tested, suitable for ELISA
Feline Leukemia Virus pAb		20-FG32				Suitable for ELISA, IHC, flowcytometry and immunoblotting
Heartworm protein		30-AH03				In-vitro determination of Dirofilaria immitis in serum/plasma

■ Matched Pairs

\* Can be used as capture and detection antibody

## Infectious Disease

Capture Antibody/Antigen	Clone #	Catalog #	Detection Antibody	Clone #	Catalog #	Comments, Assay Type
Heat Stable Enterotoxin mAb	M120529	10-1013	Heat Stable Enterotoxin mAb	M120530	10-1014	Excellent pair for ELISA
Heat Stable Enterotoxin mAb	M120531	10-1015	Heat Stable Enterotoxin mAb	M120529	10-1013	Excellent pair for ELISA
Heat Stable Enterotoxin mAb	M120531	10-1015	Heat Stable Enterotoxin mAb	M120530	10-1014	Excellent pair for ELISA
Heat Labile Enterotoxin mAb	M120532	10-1016	Heat Labile Enterotoxin mAb	M120533	10-1017	Excellent pair for ELISA
Heat Labile Enterotoxin mAb	M120534	10-1018	Heat Labile Enterotoxin mAb	M120535	10-1019	Excellent pair for ELISA
H. pylori mAb	M6091321	10-H59C	H. pylori mAb	M402326	10-H59B	Suitable for Stool H. pylori antigen test
H. pylori mAb (CagA)	M18612CG1	10-7859	H. pylori mAb (CagA)	M18612CG2	10-7860	For use in sandwich immunoassay
H. pylori mAb (CagA)	M18612CG3	10-7861	H. pylori mAb (CagA)	M18612CG2	10-7860	For use in sandwich immunoassay
H. pylori pAb		20-HR76				This antibody is specific for whole cell lysate of H. pylori
H. pylori protein		30-AH75				Soluble protein containing urease, CagA & Cytotoxin A antigens
H. pylori protein		30-AH77				Contains proteins associated with CagA & VacA genes & urease
H. pylori protein		30-AH78				Soluble protein containing urease, CagA & Cytotoxin A antigens
HBcAg mAb	M41058	10-H50B	HBcAg mAb	M41059	10-H50A	Specific for purified HBcAg
HBcAg mAb	M372914	10-H50C	HBcAg mAb	M372915	10-H50D	Recommended for ELISA
HBcAg protein		30-AH39				Reacts with HBcoreAg sera & human monoclonals in ELISA & WB
HBeAg mAb	M410513	10-H10D	HBeAg mAb	M410512	10-H10C	Suitable for ELISA
HBeAg mAb	M0071921	10-H10M	HBeAg mAb (HRP)	M0071921	61-H10K	Suitable for ELISA
HBeAg mAb	M18612HC3	10-7982	HBeAg mAb	M18612HC4	10-7983	For use in sandwich immunoassay
HBeAg mAb	M18612HCG3	10-7984	HBeAg mAb	M18612HCG4	10-7985	For use in sandwich immunoassay
HBsAg mAb	M18612HB1	10-7857	HBsAg mAb	M18612HB2	10-7858	For use in sandwich immunoassay
HBsAg mAb	M12619HB1	10-H114D	HBsAg mAb	M12619HB2	10-H114C	For use in sandwich immunoassay
HBV preS1 mAb	M0071927	10-H07A				Suitable for ELISA
HBV preS1 mAb	M0071928	10-H07B				Suitable for ELISA
HBV preS1 mAb	M0071926	10-H08A				Suitable for ELISA
HBsAg mAb	M1202085	10-3130	HBsAg mAb	M1202086	10-3131	Suitable pairing for Lateral Flow. Can also be used in ELISA
HBsAg mAb	M8121541	10-H05A	HBsAg mAb	M8121542	10-H05B	Specifically recognizes both HBsAg Ad and Ay subtypes
HBsAg mAb	M701079	10-H05G	ApoB pAb		70-XG15	Specific for all 4 subtypes of HBsAg; adr, adw, ayr and ayw
HBsAg mAb	M701077	10-H05H	HBsAg mAb	M701079	10-H05G	Specific for all 4 subtypes of HBsAg; adr, adw, ayr and ayw
HBsAg mAb	M8121542	10-H05B	HBsAg mAb	M8121543	10-H05I	Specifically recognizes the HBsAg Ay subtype
HBsAg mAb	M0071923	10-H05K	Hepatitis B Virus mAb	M0071924	10-H05M	This pair is recommended for Lateral Flow
HBsAg mAb	M0071925	10-H05J				Suitable for ELISA, IF, and WB
HBsAg pAb		20-HG20				Multiple lots available, varying titers
HBsAg pAb		20-HR20				Monospecific to Human HBsAg, ad/ay
HBsAg protein (Subtype ad)		30-AH15				>95% by SDS-PAGE
HBsAg protein (Subtype ad)		30-AH16				>99% Tested by HPLC
HBsAg protein (Subtype ay)		30-AH17				>99% Tested by HPLC
HCV protein		30-AH72	HCV protein (HRP)		65-IH20	This pair is recommended for ELISA
HCV protein		30-AH66	HCV protein		30-AH67 & 30-AH68	Suitable for lateral flow

■ Matched Pairs

\* Can be used as capture and detection antibody

Capture Antibody/Antigen	Clone #	Catalog #	Detection Antibody	Clone #	Catalog #	Comments, Assay Type
HCV protein (Core)		30-AH69				Recommended for Indirect ELISA
HCV NS3 protein		30-AH70				Recommended for Indirect ELISA
HCV protein		30-AH73				Recommended for Indirect ELISA
HCV protein		30-AH64				Recommended for Indirect or sandwich method
HEV protein (HRP)		65-IH35				Suitable for ELISA and WB
HEV protein (HRP)		30-AH29				Recommended for Indirect ELISA
HPV11 E7 mAb	M18612HP1	10-7992	HPV11 E7 mAb	M18612HP2	10-7993	For use in sandwich immunoassay
HPV16 E7 mAb	M18612HP3	10-7986	HPV16 E7 mAb	M18612HP4	10-7987	For use in sandwich immunoassay
HPV16 E7 mAb	M18612HP5	10-7988	HPV16 E7 mAb	M18612HP6	10-7989	For use in sandwich immunoassay
HPV18 E7 mAb	M18612HP7	10-7990	HPV18 E7 mAb	M18612HP8	10-7991	For use in sandwich immunoassay
HSV1 mAb	M4091312	10-H25F				Reacts with HSV1 MacIntyre, F(1) & MP strains, suitable for IFA/DFA
HSV2 mAb	M690403	10-H45C				Reacts with glycoprotein C (gC-2) of HSV2 only, suitable for IFA
HSV2 mAb	M680910	10-H45E				Reacts with glycoprotein G (gG) of HSV2 only, suitable for IFA
HSV2 mAb	M4091315	10-H45H				Reactive against HSV2 MS and G strains, suitable for IFA & DFA
HSV2 mAb	M4091316	10-H45I				Reactive against HSV2 MS and G strains, suitable for IFA & DFA
HSV1 + HSV2 mAb	M4091313	10-H44H				Detects HSV1 MacIntyre, F & MP strains & HSV2 MS & G strains
HSV1 + HSV2 mAb	M4091314	10-H44I				Detects HSV1 MacIntyre, F & MP strains & HSV2 MS & G strains
HSV1 + HSV2 pAb		20-HR50				Specific for the ICP's and late structural (virion) antigens
HSV1 protein		30-AH20				MacIntyre strain produced in E6 cells
HSV1 protein		30-AH23				Strain G produced in E6 cells
HSV2 protein		30-AH22				Suitable for ELISA & WB
HSV2 protein		65-IH27				Suitable for Indirect ELISA & WB
IBDV mAb	M18612IB1	10-7844	IBDV mAb	M18612IB2	10-7845	Excellent pair for ELISA
IBDV mAb	M18612IB3	10-7846	IBDV mAb	M18612IB4	10-7847	Excellent pair for ELISA
*Influenza A mAb	M2110169	10-I50A	Influenza A mAb	M2110169	10-I50A	Recognizes nucleoprotein, suitable for IFA, IHC & ELISA
Influenza A mAb	M2110169	10-I50A	Influenza A mAb	M8121722	10-I50H	Recognizes nucleoprotein, suitable for ELISA and IFA
Influenza A mAb	M8121722	10-I50H	Influenza A mAb	M8121721	10-I50G	Recognizes nucleoprotein, suitable for ELISA and IFA
Influenza A mAb	M8121722	10-I50H	Influenza A mAb	M8121723	10-I50I	Recognizes nucleoprotein, suitable for ELISA and IFA
Influenza A mAb	M51782	10-I50U	Influenza A mAb	M11742	10-I50Q	Nucleoprotein specific, excellent pair for ELISA
Influenza A mAb	M31762	10-I50S	Influenza A mAb	M11742	10-I50Q	Nucleoprotein specific, excellent pair for ELISA
Influenza A mAb	M11151	10-I50K	Influenza A mAb	M11742	10-I50Q	Nucleoprotein specific, excellent pair for ELISA
Influenza A mAb	M31171	10-I50M	Influenza A mAb	M01732	10-I50P	Nucleoprotein specific, excellent for Latex Immunochromatography
Influenza A mAb	M51191	10-I50O	Influenza A mAb	M01732	10-I50P	Nucleoprotein specific, excellent for Gold Immunochromatography
Influenza A mAb	M41181	10-I50N	Influenza A mAb	M21161	10-I50L	Nucleoprotein specific, excellent for Gold Immunochromatography
Influenza A mAb	M31171	10-I50M	Influenza A mAb	M11742	10-I50Q	Nucleoprotein specific, suitable pair for ELISA
Influenza A mAb	M41181	10-I50N	Influenza A mAb	M11742	10-I50Q	Nucleoprotein specific, suitable pair for ELISA
Influenza A mAb	M11742	10-I50Q	Influenza A mAb	M31171	10-I50M	Nucleoprotein specific, suitable pair for ELISA
Influenza A mAb	M11742	10-I50Q	Influenza A mAb	M41181	10-I50N	Nucleoprotein specific, suitable pair for ELISA
Influenza A mAb	M11742	10-I50Q	Influenza A mAb	M31762	10-I50S	Nucleoprotein specific, suitable pair for ELISA
Influenza A mAb	M18612IFA1	10-7866	Influenza A mAb	M18612IFA2	10-7867	Nucleoprotein specific, use in sandwich immunoassay
Influenza A mAb	M140612FA3	10-1098	Influenza A mAb	M140612FA1	10-1096	Nucleoprotein specific, for use in ELISA & WB
Influenza A mAb	M140612FA4	10-1099	Influenza A mAb	M140612FA1	10-1096	Nucleoprotein specific, for use in ELISA & WB

■ Matched Pairs

\* Can be used as capture and detection antibody



## Infectious Disease

Capture Antibody/Antigen	Clone #	Catalog #	Detection Antibody	Clone #	Catalog #	Comments, Assay Type
Influenza A mAb	M140612FA5	10-1100	Influenza A mAb	M140612FA1	10-1096	Nucleoprotein specific, for use in ELISA & WB
Influenza A mAb	M140612FA6	10-1101	Influenza A mAb	M140612FA1	10-1096	Nucleoprotein specific, for use in ELISA & WB
Influenza A mAb	M140612FA5	10-1100	Influenza A mAb	M140612FA2	10-1097	Nucleoprotein specific, for use in ELISA & WB
Influenza A mAb	M140612FA6	10-1101	Influenza A mAb	M140612FA2	10-1097	Nucleoprotein specific, for use in ELISA & WB
Influenza A mAb	M140612FA4	10-1099	Influenza A mAb	M140612FA2	10-1097	Nucleoprotein specific, for use in ELISA & WB
Influenza A mAb	M140612FA8	10-1103	Influenza A mAb	M140612FA7	10-1102	Nucleoprotein specific, suitable for Immunochromatography
Influenza A mAb	M18612IFA3	10-7839	Influenza A mAb	M18612IFA4	10-7840	Haemagglutinin H1 specific, use in sandwich immunoassay
Influenza A mAb	M18612IFA5	10-7854	Influenza A mAb	M18612IFA6	10-7855	Haemagglutinin H1 specific, use in sandwich immunoassay
Influenza A mAb	M18612IFA5	10-7854	Influenza A mAb	M18612IFA7	10-7856	Haemagglutinin H1 specific, use in sandwich immunoassay
Influenza A mAb	M322210	10-I50B				Recognizes the haemagglutinin of H1N1 serotype
Influenza A mAb	M322211	10-I50C				Recognizes the nucleoprotein
Influenza A mAb	M409012	10-I50D				Recognizes nucleoprotein, recommended for competitive ELISA
Influenza A mAb	M4090913	10-I50E				Recognizes nucleoprotein, recommended for competitive ELISA
Influenza A mAb	M4090914	10-I50F				Reactive against haemagglutinin of influenza A
Influenza A pAb		20-I623				H1N1 specific. Excellent for IHC, IFA, WB
Influenza A pAb		20-I624				H3N2 specific. Excellent for IHC, IFA, WB
Influenza A protein		30-AI50				Strain Texas 1/77 (H3N2)
*Influenza B	M2110171	10-I55B	Influenza B mAb	M2110171	10-I55B	Recognizes nucleoprotein. Suitable for lateral flow
Influenza B	M3072810	10-I55E	Influenza B mAb	M2110171	10-I55B	Recognizes nucleoprotein. Suitable for lateral flow
Influenza B	M3072811	10-I55F	Influenza B mAb	M2110171	10-I55B	Recognizes nucleoprotein. Suitable for lateral flow
Influenza B	M3072809	10-I55D	Influenza B mAb	M2110171	10-I55B	Recognizes nucleoprotein. Suitable for lateral flow
Influenza B mAb	M12212	10-I55Q	Influenza B mAb	M02202	10-I55P	Nucleoprotein specific, excellent pair for ELISA
Influenza B mAb	M62151	10-I550	Influenza B mAb	M02202	10-I55P	Nucleoprotein specific, excellent pair for ELISA
Influenza B mAb	M42131	10-I55M	Influenza B mAb	M02202	10-I55P	Nucleoprotein specific, excellent pair for ELISA
Influenza B mAb	M42245	10-I55T	Influenza B mAb	M12212	10-I55Q	Nucleoprotein specific, excellent for Latex Immunochromatography
Influenza B mAb	M12212	10-I55Q	Influenza B mAb	M42131	10-I55M	Nucleoprotein specific, excellent for Latex Immunochromatography
Influenza B mAb	M42131	10-I55M	Influenza B mAb	M62151	10-I550	Nucleoprotein specific, excellent for Gold Immunochromatography
Influenza B mAb	M42245	10-I55T	Influenza B mAb	M02202	10-I55P	Nucleoprotein specific, suitable pair for ELISA
Influenza B mAb	M12212	10-I550	Influenza B mAb	M32143	10-I55S	Nucleoprotein specific, suitable pair for ELISA
Influenza B mAb	M12212	10-I55Q	Influenza B mAb	M42245	10-I55T	Nucleoprotein specific, suitable pair for ELISA
Influenza B mAb	M12212	10-I55Q	Influenza B mAb	M52246	10-I55U	Nucleoprotein specific, suitable pair for ELISA
Influenza B mAb	M12212	10-I55Q	Influenza B mAb	M32143	10-I55S	Nucleoprotein specific, suitable pair for ELISA
Influenza B mAb	M52246	10-I55U	Influenza B mAb	M42131	10-I55M	Nucleoprotein specific, suitable pair for ELISA
Influenza B mAb	M52246	10-I55U	Influenza B mAb	M02202	10-I55P	Nucleoprotein specific, suitable pair for ELISA
Influenza B mAb	M52246	10-I55U	Influenza B mAb	M12212	10-I55Q	Nucleoprotein specific, suitable pair for ELISA
Influenza B mAb	M18612IFB1	10-7862	Influenza B mAb	M18612IFB2	10-7863	Nucleoprotein specific, use in sandwich immunoassay
Influenza B mAb	M18612IFB3	10-7864	Influenza B mAb	M18612IFB4	10-7865	Nucleoprotein specific, use in sandwich immunoassay
Influenza B mAb	M140612FB3	10-1106	Influenza B mAb	M140612FB1	10-1104	Nucleoprotein specific, suitable pair for ELISA
Influenza B mAb	M140612FB5	10-1108	Influenza B mAb	M140612FB1	10-1104	Nucleoprotein specific, suitable pair for ELISA
Influenza B mAb	M140612FB6	10-1109	Influenza B mAb	M140612FB1	10-1104	Nucleoprotein specific, suitable pair for ELISA
Influenza B mAb	M140612FB7	10-1110	Influenza B mAb	M140612FB1	10-1104	Nucleoprotein specific, suitable pair for ELISA
Influenza B mAb	M140612FB3	10-1106	Influenza B mAb	M140612FB2	10-1105	Nucleoprotein specific, suitable pair for ELISA
Influenza B mAb	M140612FB5	10-1108	Influenza B mAb	M140612FB2	10-1105	Nucleoprotein specific, suitable pair for ELISA

■ Matched Pairs

\* Can be used as capture and detection antibody

Capture Antibody/Antigen	Clone #	Catalog #	Detection Antibody	Clone #	Catalog #	Comments, Assay Type
Influenza B mAb	M140612FB7	10-1110	Influenza B mAb	M140612FB2	10-1105	Nucleoprotein specific, suitable pair for ELISA
Influenza B mAb	M140612FB8	10-1111	Influenza B mAb	M140612FB2	10-1105	Nucleoprotein specific, suitable for Immunochromatography
Influenza B mAb	M140612FB4	10-1107	Influenza B mAb	M140612FB3	10-1106	Nucleoprotein specific, suitable for Immunochromatography
Influenza B mAb	M140612FB9	10-1112	Influenza B mAb	M140612FB8	10-1111	Nucleoprotein specific, suitable pair for ELISA
Influenza B mAb	M4090916	10-I55G				Recognizes the nucleoprotein
Influenza B mAb	M4090915	10-I55H				Recognizes the nucleoprotein
Influenza B pAb		20-IG29				Excellent when used in IHC, IFA and Immunoblotting
Influenza B protein		30-AI75				Strain Hong Kong 5/72
L. pneumophila LPS mAb	M18612LG1	10-7870	L. pneumophila LPS mAb	M12619LP	10-L105A	For use in sandwich immunoassay
Listeria mAb	M18612LS1	10-7868	Listeria mAb	M18612LS2	10-7869	For use in sandwich immunoassay
Malaria mAb	M0071929	10-M10A	Pf HRP2 mAb	M0071930	10-P09H	Recommended for the development of a lateral flow test
Metapneumovirus mAb	M6060821	10-M35A				Suitable applications are ELISA & IFA
Metapneumovirus mAb	M6060822	10-M35B				Suitable applications are ELISA & IFA
M. tuberculosis pAb		20-MR50				Reacts with a minimum of 2 major M. tuberculosis bands by IEP
M. tuberculosis protein		30-AM66				Suitable as capture antigen in immunochromatography & ELISA
M. tuberculosis protein		30-AM67				Suitable as capture antigen in immunochromatography & ELISA
M. tuberculosis 63 kDa protein		30-AM71	M. tuberculosis 61.4 kDa protein		30-AM72	This pair is recommended for lateral flow test development
M. tuberculosis 65 kDa protein		30-AM69	M. tuberculosis 96.4 kDa protein		30-AM70	This pair is recommended for lateral flow test development
M. tuberculosis 48 kDa protein		30-AM68	M. tuberculosis 48 kDa protein		30-AM74	This pair is recommended for lateral flow test development
M. tuberculosis 63 kDa protein		30-AM73				Suitable applications include ELISA & WB
Mycoplasma pneumoniae mAb	M9010921	10-M40D				Reacts with P1 protein, suitable for ELISA, IFA & WB
Mycoplasma pneumoniae mAb	M9010922	10-M40E				Reacts with a >200 kDa antigen, suitable for ELISA, IFA & WB
Mycoplasma pneumoniae mAb	M9010923	10-M40F				Reactive with multiple bands, suitable for ELISA, IFA & WB
Mycoplasma pneumoniae pAb		20-MR54				Specific for Mycoplasma pneumoniae whole organism
Mycoplasma pneumoniae protein		30-AM40				Mycoplasma pneumoniae strain FH
Newcastle disease virus mAb	M18612NW1	10-7871	Newcastle disease virus mAb	M18612NW2	10-7872	For use in sandwich immunoassay
Newcastle disease virus mAb	M18612NW3	10-7873	Newcastle disease virus mAb	M18612NW4	10-7874	For use in sandwich immunoassay
Norovirus mAb	M080501	10-N55A	Norovirus mAb	M080502	10-N55B	Specific for capsid protein, suitable for ELISA detection in stool
Norovirus VP1 mAb	M120539	10-1023	Norovirus VP1 mAb	M120540	10-1024	Excellent pair for ELISA
Parainfluenza type 1 mAb	M03022809	10-P43B	Parainfluenza type 1 + 3 mAb	M03022810	10-P43C	Specific for fusion protein, suitable for ELISA & IFA
Parainfluenza type 1 mAb	M4090917	10-P43D				Reactive against Sendai/52, (HA-2) C35, Sendai/Cantell in IFA
Parainfluenza type 1 pAb		20-PG89				Suitable for IFA applications
Parainfluenza type 1 protein		30-AP43				VP1 strain
Parainfluenza type 2 mAb	M2110190	10-P53A				Recommended for competitive ELISA
Parainfluenza type 2 mAb	M4090918	10-P53B				Reactive against the Greer (CA virus) strain. Suitable for IFA
Parainfluenza type 3 pAb		20-PG90				Suitable for IFA applications

■ Matched Pairs

\* Can be used as capture and detection antibody

## Infectious Disease

Capture Antibody/Antigen	Clone #	Catalog #	Detection Antibody	Clone #	Catalog #	Comments, Assay Type
Parainfluenza type 2 protein		30-AP53				Greer strain
Parainfluenza type 3 mAb	M02120321	10-P63A	Parainfluenza type 3 mAb	M0301307	10-P63B	Specific for hemagglutinin of Para 3, suitable for ELISA & IFA
Parainfluenza type 3 mAb	M4090919	10-P63C				Reactive against (HA-1) C243 strain, suitable for IFA
Parainfluenza 3 protein		30-AP63				Reactive against (HA-1) C243 strain
Parvovirus mAb	M18612PV1	10-7875	Parvovirus mAb	M18612PV2	10-7876	For use in sandwich immunoassay
PBP2a mAb	M8121521	10-P08A	PBP2a mAb	M8121522	10-P08B	Specific for PBP2a of Methicillin-resistant <i>S. aureus</i>
PBP2a mAb	M8121523	10-P08C	PBP2a mAb	M8121522	10-P08B	Specific for PBP2a of Methicillin-resistant <i>S. aureus</i>
PANLDH mAb	M901025	10-P09C	PLDH mAb	M901028	10-P09F	Specific for falciparum, ovale, vivax, malariae in ELISA & gold conjugation
PfLDH mAb	M901026	10-P09D				Specific for <i>P. falciparum</i> lactate dehydrogenase in ELISA
PfLDH mAb	M901027	10-P09E				Specific for <i>P. vivax</i> lactate dehydrogenase
Rabies protein		30-AR35				Recombinant Phosphoprotein expressed in <i>E. coli</i>
RSV mAb	M1121802	10-R25C	RSV mAb	M1121802	10-R25C	Fusion protein, suitable for ELISA & IFA
RSV mAb	M1121802	10-R25C	RSV mAb	M05091321	10-R25J	Fusion protein, suitable for ELISA & IFA
RSV mAb	M1121802	10-R25C	RSV mAb	M03031121	10-R25E	Fusion protein, suitable for ELISA & IFA
RSV mAb	M291207	10-R25B				Nucleoprotein, suitable for a competitive ELISA
RSV mAb	M4090920	10-R25G				Suitable for ELISA
RSV mAb	M4090921	10-R25H				Fusion protein, suitable for ELISA & IFA
RSV mAb	M8122029	10-R25K				Fusion protein, Neutralizing antibody, suitable for ELISA & IFA
RSV mAb	M9020421	10-R25L				Nucleoprotein, broadly reactive, suitable for ELISA & IFA
RSV pAb		20-RG45				Immunogen-Human RSV isolate
RSV protein		30-AR24				MA 104 cells, Long Strain
RSV protein		30-AR25				Long Strain
Rotavirus mAb	M1202101	10-3146	Rotavirus mAb	M1202101	10-3146	Can be used as the membrane coating and detection antibody
Rotavirus mAb	M74251	10-R30C	Rotavirus mAb	M74252	10-R30D	Reactive with intact strains RRV, WA & bovine, suitable for ELISA
Rotavirus mAb	M74251	10-R30C	Rotavirus mAb	M74253	10-R30E	Reactive with intact strains RRV, WA & bovine, suitable for ELISA
Rotavirus mAb	M29301	10-R30A				Specific for human, monkey and porcine p41 in ELISA & WB
Rotavirus VP6 mAb	M120536	10-1020	Rotavirus VP6 mAb	M120538	10-1022	Excellent pair for ELISA
Rotavirus VP6 mAb	M120537	10-1021	Rotavirus VP6 mAb	M120538	10-1022	Excellent pair for ELISA
Rotavirus pAb		20-RG50				Specific to ICP's and late structural (virions) antigens
Rotavirus protein		30-AR29				Strain SA-11
Salmonella mAb (LPS core)	M9011221	10-S05F	Salmonella mAb (LPS core)	M9011223	10-S05H	Reacts with O- A/B/C1/C2/D/E1/E3/E4/F/G1/G2 in ELISA & IFA
Salmonella mAb (LPS core)	M9011221	10-S05F	Salmonella mAb (LPS core)	M9011224	10-S05I	Reacts with O- A/B/C1/C2/D/E1/E3/E4/F/G1/G2 in ELISA & IFA
Salmonella mAb (LPS core)	M9011222	10-S05G	Salmonella mAb (LPS core)	M9011223	10-S05H	Reacts with O- A/B/C1/C2/D/E1/E3/E4/F/G1/G2 in ELISA & IFA
Salmonella mAb (LPS core)	M9011222	10-S05G	Salmonella mAb (LPS core)	M9011224	10-S05I	Reacts with O- A/B/C1/C2/D/E1/E3/E4/F/G1/G2 in ELISA & IFA
Salmonella pAb		20-SR11				Specific to a broad range of Salmonella O & H strains
<i>S. enterotoxin</i> Type A mAb	M18612EA1	10-7831	<i>S. enterotoxin</i> Type A mAb	M18612EA2	10-7832	For use in sandwich immunoassay

■ Matched Pairs

\* Can be used as capture and detection antibody

Capture Antibody/Antigen	Clone #	Catalog #	Detection Antibody	Clone #	Catalog #	Comments, Assay Type
S. enterotoxin Type A mAb	M18612EA3	10-7833	S. enterotoxin Type A mAb	M18612EA2	10-7832	For use in sandwich immunoassay
S. enterotoxin Type B mAb	M18612EB1	10-7825	S. enterotoxin Type B mAb	M18612EB2	10-7826	Excellent pair for ELISA
S. enterotoxin Type D mAb	M120521	10-1005	S. enterotoxin Type D mAb	M120522	10-1006	Excellent pair for ELISA
S. enterotoxin Type D mAb	M120523	10-1007	S. enterotoxin Type D mAb	M120524	10-1008	Excellent pair for ELISA
S. enterotoxin Type E mAb	M120525	10-1009	S. enterotoxin Type E mAb	M120526	10-1010	Excellent pair for ELISA
S. enterotoxin Type E mAb	M120527	10-1011	S. enterotoxin Type E mAb	M120528	10-1012	Excellent pair for ELISA
S. enterotoxin Type E mAb	M120526	10-1010	S. enterotoxin Type E mAb	M120528	10-1012	Excellent pair for ELISA
S. enterotoxin Type G mAb	M18612EG1	10-7829	S. enterotoxin Type G mAb	M18612EG2	10-7830	For use in sandwich immunoassay
S. enterotoxin Type I mAb	M18612EI2	10-7828	S. enterotoxin Type I mAb	M18612EI1	10-7827	For use in sandwich immunoassay
Streptococcus Group A pAb		20-SG05				Bulk quantities available
Streptococcus Group A pAb		70-XG70				Affinity purified, suitable for lateral flow & gold conjugation assays
Streptococcus Group A pAb		70-XR85				Affinity purified against the whole organism
Streptococcus Group A pAb		70-XR70				Suitable for membrane & coated tube enzyme immunoassays
Streptococcus Group A pAb		70-XR73	Streptococcus Group A pAb		70-XR73	No other cross-reactants detected
Streptococcus Group A pAb		70-XR83	Streptococcus Group A pAb		70-XR83	Suitable for membrane & coated tube enzyme immunoassays
Streptococcus Group A pAb		30-AS83				Lancefield's Group A strain
Streptococcus Group B pAb		70-XR72	Streptococcus Group B pAb		70-XR72	Affinity purified, suitable for immunodiagnostic assays
Streptococcus Group B pAb		30-AS86				Lancefield's Group B strain
Treponema pallidum pAb		20-TR89				Suitable for EIA, IHC & WB
Treponema pallidum pAb		20-TG89				Treponema pallidum 100%
p15, p17, p47 Treponema pallidum protein		30-AT70	p47 Treponema pallidum protein (HRP)		65-IT67	Suitable for ELISA development
p17 Treponema pallidum protein		30-AT72	p17 Treponema pallidum protein (HRP)		65-IT66	Suitable for ELISA development
p15 Treponema pallidum protein		30-AT75	p15 Treponema pallidum protein (HRP)		65-IT65	Suitable for ELISA development
p15, p17, p47 Treponema pallidum protein		30-AT70	p15 Treponema pallidum protein (HRP)		65-IT65, 65-IT66 & 65-IT67	Three detection antigen preps to be utilized in ELISA
p15, p17, p47 Treponema pallidum protein		30-AT76	p15, p17, p47 Treponema pallidum protein (Gold Colloid)		64-IT77	Suitable for lateral flow assay
Treponema pallidum protein		30-AT69				Hemagglutination (HA) and LATEX grade
Treponema pallidum TmpA protein		30R-AT068				> 95% pure, suitable for ELISA, WB, Dot Blot & Lateral Flow
Treponema pallidum TmpA protein (beta Galactosidase Fusion)		30R-AT032				> 95% pure, B-galactosidase (114kDa) fused at the N-terminus

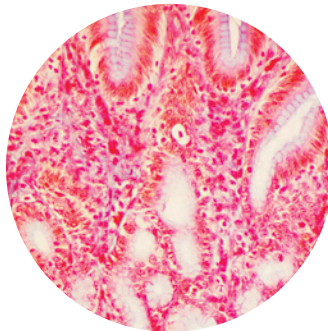


## Infectious Disease

Capture Antibody/Antigen	Clone #	Catalog #	Detection Antibody	Clone #	Catalog #	Comments, Assay Type
Treponema pallidum p15 protein		30-AT67				Affinity purified, detects 15 kDa band in SDS PAGE
Treponema pallidum p15 protein		30R-AT065				> 95% pure by SDS-PAGE, suitable for ELISA and WB
Treponema pallidum p17 protein		30-AT68				Affinity purified, specific for the 17 kD amino acid sequence
Treponema pallidum p17 protein		30-AT74				>95% by SDS-PAGE, suitable for immunodiagnostic assays
Treponema pallidum p17 protein		30R-AT066				> 90% pure by 10% SDS-PAGE analysis, suitable for ELISA & WB
Treponema pallidum p17 protein (beta Galactosidase Fusion)		30R-AT030				> 95% pure, B-galactosidase (114kDa) fused at the N-terminus
Treponema pallidum p47 protein		30R-AT067				> 90% pure by SDS-PAGE, suitable for ELISA and WB
Treponema pallidum p47 protein (beta Galactosidase Fusion)		30R-AT031				> 95% pure, B-galactosidase (114kDa) fused at the N-terminus
Tuberculosis CFP10 mAb	M18612TB1	10-7852	Tuberculosis CFP10 mAb	M18612TB2	10-7853	Excellent pair for ELISA
Wuchereria bancrofti protein		30-AW01				>95% by SDS-PAGE, suitable for immunodiagnostic assays
Yersinia pestis V Antigen mAb	M12619YV1	10-Y101B	Yersinia pestis V Antigen mAb	M12619YV2	10-Y102A	For use in sandwich immunoassay

■ Matched Pairs

\* Can be used as capture and detection antibody



Pyloric region of the stomach

## Miscellaneous

Capture Antibody/Antigen	Clone #	Catalog #	Detection Antibody	Clone #	Catalog #	Comments, Assay Type
Avidin mAb	M18612AV1	10-7975	Avidin mAb	M18612EG3	10-7977	For use in sandwich immunoassay
Avidin mAb	M18612AV2	10-7976	Avidin mAb	M18612EG3	10-7977	For use in sandwich immunoassay
CD40L mAb	M18612CL1	10-7888	CD40L mAb	M18612CL2	10-7889	For use in sandwich immunoassay
CD40L mAb	M18612CL2	10-7889	CD40L mAb	M18612L3	10-7890	For use in sandwich immunoassay
Ferritin mAb	M18612FR1	10-7906	Ferritin mAb	M18612FR2	10-7907	For use in sandwich immunoassay
Fibrinogen mAb	M12619FB1	10-F107B	Fibrinogen mAb	M12619FB2	10-F107C	For use in sandwich immunoassay
HSA mAb	M12619HS1	10-A120B	HSA mAb	M12619HS3	10-A120A	For use in sandwich immunoassay
HSA mAb	M12619HS1	10-A120B	HSA mAb	M12619HS2	10-A120D	For use in sandwich immunoassay
IFN alpha mAb	M18612IN1	10-7925	IFN alpha mAb	M18612IN2	10-7926	For use in sandwich immunoassay
IFN beta mAb	M18612IN3	10-7914	IFN beta mAb	M18612IN4	10-7915	For use in sandwich immunoassay
IFN beta mAb	M18612IN5	10-7916	IFN beta mAb	M18612IN6	10-7917	For use in sandwich immunoassay
IFN gamma mAb	M18612IN7	10-7923	IFN gamma mAb	M18612IN8	10-7924	For use in sandwich immunoassay
IGFBP1 mAb	M18612IG1	10-7918	IGFBP1 mAb	M18612IG2	10-7919	Excellent pair for ELISA
IGFBP4 mAb	M18612IG3	10-7920	IGFBP4 mAb	M18612IG4	10-7921	For use in sandwich immunoassay
IGFBP4 mAb	M18612IG4	10-7921	IGFBP4 mAb	M18612IG5	10-7922	For use in sandwich immunoassay
IL2 mAb	M18612IL2-1	10-7930	IL2 mAb	M18612IL2-2	10-7931	Excellent pair for ELISA
IL3 mAb	M18612IL3-1	10-7927	IL3 mAb	M18612IL3-3	10-7929	For use in sandwich immunoassay
IL3 mAb	M18612IL3-2	10-7928	IL3 mAb	M18612IL3-3	10-7929	For use in sandwich immunoassay
IL6 mAb	KT106	10R-7809	IL6 mAb (HRP)	KT105	61R-1886	For use in sandwich immunoassay
Human IgA mAb	M18612A1	10-7808	Human IgA mAb	M18612A2	10-7809	Excellent pair for ELISA
Human IgE mAb	M12619E1	10-I104C	Human IgE mAb	M12619E2	10-I104B	Excellent pair for ELISA
Human IgG Fc mAb	M18612FC1	10-7810	Human IgG Fc mAb	M18612FC2	10-7811	Excellent pair for ELISA
*Human IgG4 mAb	M12619G4	10-I129A	Human IgG4 mAb	M12619G4	10-I129A	Use as coating or detection of total IgG4 level in ELISA
*Human Kappa Light Chain mAb	M18612K1	10-7812	Human Kappa Light Chain mAb	M18612K1	10-7812	Use as coating or detection- Bence Jones proteins in ELISA
*Human Kappa Light Chain mAb	M12619KL	10-K100A	Human Kappa Light Chain mAb	M12619KL	10-K100A	Use as coating or detection of kappa-chains or kappa-Ig
*Human Lambda Light Chain mAb	M18612L1	10-7813	Human Lambda Light Chain mAb	M18612L1	10-7813	10-7813 can be used as coating or detection in ELISA
*Human Lambda Light Chain mAb	M18612L2	10-7814	Human Lambda Light Chain mAb	M18612L2	10-7814	10-7814 can be used as coating or detection in ELISA
Secretory component mAb	M18612SC1	10-7898	Secretory component mAb	M18612SC2	10-7899	Excellent pair for ELISA
Transferrin mAb	M18612TF1	10-7962	Transferrin mAb	M18612TF2	10-7963	For use in sandwich immunoassay
Transferrin mAb	M18612TF3	10-7964	Transferrin mAb	M12619TF1	10-T118A	For use in sandwich immunoassay
Transferrin Receptor mAb	M12619TR2	10-T119C	Transferrin Receptor mAb	M18612TF4	10-7974	For use in sandwich immunoassay
Transferrin Receptor mAb	M12619TR2	10-T119C	Transferrin Receptor mAb	M12619TR1	10-T119A	For use in sandwich immunoassay
Transferrin Receptor mAb	M18612TF4	10-7974	Transferrin Receptor mAb	M12619TR2	10-T119C	For use in sandwich immunoassay

■ Matched Pairs

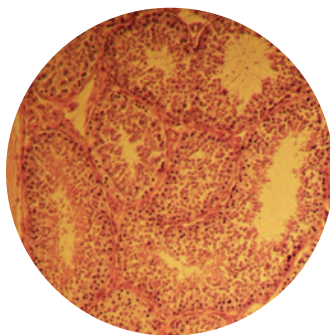
\* Can be used as capture and detection antibody

## Steroids

Capture Antibody/Antigen	Clone #	Catalog #	Detection Antibody	Clone #	Catalog #	Comments, Assay Type
Aldosterone 3 pAb		20-AR23				Multiple lots available, varying titers
Cortisol mAb	M021509	10-C30D	Cortisol 3 CMO-HRP	65-IC08		Recommended for ELISA
Cortisol 3 pAb		20-CR50				Some lots are excellent for coated tube application
DHEA 3 Sulfate pAb		20-DR83	DHEA 3-HRP	65-ID83		Recommended for ELISA
DHEA 3 Sulfate pAb		20-DR83				Titer: 16,000 tests/ml by RIA
Estradiol pAb		20-EG05				1:1,100,000 solid phase RIA and EIA
Estradiol 3 pAb		20-ER05				400,000 tests/ml by 125I RIA DAB system. Multiple lots available
Estradiol 6 CMO-HRP	M405233	10-E15A	Estradiol 6 CMO-HRP	65-IE16		Recommended for ELISA
Estradiol 6,17 beta pAb		20-ER06				Highly Specific 6 position antibody. EIA and RIA grades available
Estriol 6 pAb		20-ER12				Highly Specific 6 position antibody (CMO-BSA). Many lots available
Estradiol 3+6 pAb		20-ER07				1,500,000 tests/ml in 125I RIA; ED50 = 0.17ng/ml @ 44% B/TC
Estriol 3 pAb		20-ER10				Multiple lots available, varying titers
Estriol 6 pAb		20-ER12				Highly Specific 6 position antibody (CMO-BSA). Many lots available
Estrogen pAb		20-ER14				30,000 test/ml by RIA, neat serum, no preservatives added
Nortestosterone pAb		20-NR55				~200,000 tests/ml in 125I RIA with 19-Nortestosterone-3 as tracer
Progesterone 11 pAb		20-PR20				These antibodies are very sensitive and specific
Progesterone 11 mAb	M021809	10-P10D	3-CMO Progesterone-HRP	65-IP27		Recommended for immunoassays
Testosterone mAb	M021812	10-T07A	Testosterone-3-CMO-HRP	65-IT07		Suitable for ELISA
Testosterone 3 pAb		20-TR03				30,000 tests/ml in 125I RIA, ED50 = 1.3ng/ml @ 84% Bo
Testosterone 19 pAb		20-TR05				~750,000 tests/ml in 125I RIA @ 68% B/TC, multiple lots available

■ Matched Pairs

\* Can be used as capture and detection antibody



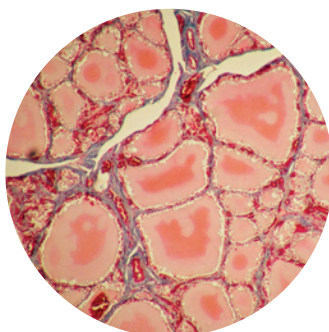
Seminiferous tubules in testis

## Thyroid Products

Capture Antibody/Antigen	Clone #	Catalog #	Detection Antibody	Clone #	Catalog #	Comments, Assay Type
Thyroglobulin mAb	M18612TG1	10-7834	Thyroglobulin mAb	M18612TG2	10-7835	For use in sandwich immunoassay
Thyroglobulin protein		30-AT01				>99% pure by SDS PAGE
Thyroglobulin protein		30-AT02				>98% pure by SDS-PAGE
Thyroid Peroxidase mAb	M18612TP1	10-7971	Thyroid Peroxidase mAb	M18612TP3	10-7973	For use in sandwich immunoassay
Thyroid Peroxidase mAb	M18612TP2	10-7972	Thyroid Peroxidase mAb	M18612TP3	10-7973	For use in sandwich immunoassay
Thyroid Peroxidase protein		30-AT41				Source- human thyroid, 98% by SDS-PAGE
Thyroid Peroxidase protein		30-AT61				Source- Baculovirus in sf9 cells, >96% by SDS PAGE
Thyroxine mAb	M94207	10-T30B				Suitable for competitive free T4 assay
Thyroxine mAb	7024-31	10C-CR1053M2				Less than 1% cross reactivity was observed with T3, T2 and rT3
Thyroxine mAb	M94208	10-T30C				Suitable for ELISA
Thyroxine pAb		20-TR40				Multiple lots available, varying titers. Can be used in solid phase
Thyroxine pAb		20-TS40				85,000 tests per ml in I125 RIA. Multiple lots of varying titers
Thyroxine protein (BSA)		80-IT50				Immunogen quality
TSH mAb	M12619TSH	10-T111A	TSH mAb	M18612TSH1	10-7836	For use in two-site enzyme immunoassay
TSH mAb	M18612TSH2	10-7837	TSH mAb	M18612TSH3	10-7838	For use in two-site enzyme immunoassay
TSH beta mAb	M94206	10-T25C	TSH beta mAb	M94205	10-T25B	Suitable for ELISA
TSH intact pAb		70R-7577	TSH beta pAb		70R-7554	Matched pair for immunoassays
TSH pAb		20-TG25				Multiple lots available, varying titers
TSH pAb		20-TR25				>100,000 tests/ml in RIA DAB assay system
Triiodothyronine mAb	M94210	10-T35A				Recommended for competitive ELISA
Triiodothyronine pAb		20-TG45				Multiple lots available, varying titers
Triiodothyronine pAb		20-TR45				Multiple lots available, varying titers
Triiodothyronine pAb		20-TS45				100,000 test per ml by RIA
Triiodothyronine protein (BSA)		80-IT30				Immunogen quality

■ Matched Pairs

\* Can be used as capture and detection antibody



Follicles of colloid in thyroid



## Tumor Markers

Capture Antibody/Antigen	Clone #	Catalog #	Detection Antibody	Clone #	Catalog #	Comments, Assay Type
alpha 1 Acid Glycoprotein pAb		20-OG20				Human Alpha-1 Acid Glycoprotein only. Monospecific in IEP
AFP mAb	M1202096	10-3141	AFP mAb	M1202095	10-3140	Suitable pairing for Lateral Flow. Can also be used in ELISA
AFP mAb	2127435	10C-CR1007M4	AFP mAb	6127435	10C-CR1007M5	Good pair for lateral flow & ELISA
AFP mAb	M19301	10-A05B	AFP pAb		70-XG05	Good pair for ELISA
AFP mAb	M12619AF1	10-A100A	AFP mAb	M12619AF2	10-A100B	For use in sandwich immunoassay
AFP pAb		20-AG10				Purified human cord serum was used as the immunogen
AFP pAb		20-AR10				100,000 tests/ml by 125I RIA ED50 = 55ng/ml @ 30% B/TC
AFP protein		30-AA10				Prepared from Human cord serum
AFP protein		30-AA05				Prepared from Human cord serum
AFP Receptor mAb	M18612AF1	10-7877	AFP Receptor mAb	M18612AF2	10-7878	For use in sandwich immunoassay
beta 2 Microglobulin protein		30-AM11				60-80% by SDS-PAGE
beta 2 Microglobulin protein		30C-CP1022				>95% by SDS-PAGE
beta 2 Microglobulin protein		30C-CP1022U				>98% by SDS-PAGE
CA 15-3 mAb	M002208	10-C03F	CA 15-3 mAb	M002204	10-C03E	M002208 targets the VNTR region
*CA 15-3 mAb	M002204	10-C03E	CA 15-3 mAb	M002204	10-C03E	M002204 pairs with itself in serum assays
CA 15-3 mAb	M201211	10-CA15A	CA 15-3 mAb	M2012112	10-CA15B	Suitable for sandwich immunoassay
CA 15-3 protein		30-AC16				Purified from human ascites fluid
CA 15-3 protein		30-AC17				Purified from human ascites fluid
CA 15-3 protein		30C-CP9064				Minimal crossreactivity with CA72-4,15-3,19-9/CEA/CYFRA/ Ferritin/AFP
CA 19-9 mAb	M081221	10-C04E				ELISA, IHC
CA 19-9 mAb	M2012114	10-CA19A	CA 19-9 mAb	M2012113	10-CA19B	Suitable for sandwich immunoassay
CA 19-9 protein		30-AC15				Purified from human ascites fluid
CA 19-9 protein		30-AC14				Purified from human ascites fluid
CA 19-9 protein		30-AC09				Human cell line from colon
CA 19-9 protein		30C-CP9063				Prepared from human adenocarcinoma cell line
*CA 27-29 mAb	M4021209	10-C01A	CA 27-29 mAb	M4021209	10-C01A	Suitable pairs for ELISA. M4021209 is also excellent in Westerns
CA 72-4 protein		30-AC23				Purified from human ascites fluid
CA 72-4 protein		30-AC24				Purified from human ascites fluid
CA 72-4 protein		30C-CP1065				Minimal crossreactivity with CA72-4,15-3,19-9/CEA/CYFRA/ Ferritin/AFP
CA 125 mAb	M002201	10-C02E	CA 125 mAb	M002203	10-C02F	Excellent pair for ELISA
CA 125 mAb	M18612BCA1	10-7895	CA 125 mAb	M18612BCA2	10-7896	For use in sandwich immunoassay
CA 125 mAb	M18612BCA1	10-7895	CA 125 mAb	M18612BCA3	10-7897	For use in sandwich immunoassay
CA 125 protein		30-AC20				Purified from human ascites fluid
CA 125 protein		30-AC21				Purified from human ascites fluid
CA 125 protein		30-AC11				Human cell line
CEA mAb	M0911041	10-C10F	CEA mAb	M0911042	10-C10G	Matched pair for immunoassays
CEA mAb	M111147	10-C10D	CEA mAb	M111146	10-C10E	Excellent pair for ELISA
CEA mAb	M18612CEA1	10-7882	CEA mAb	M18612CEA2	10-7883	For use in sandwich immunoassay
CEA pAb		20-CG05				75,000 tests per ml by RIA
CEA protein		30-AC25				>80% by SDS-PAGE
CEA protein		30-AC30				>98% by SDS-PAGE

■ Matched Pairs

\* Can be used as capture and detection antibody

## Tumor Markers

Capture Antibody/Antigen	Clone #	Catalog #	Detection Antibody	Clone #	Catalog #	Comments, Assay Type
CEA protein		30C-CP1001-1				Purified by affinity chromatography from recombinant cell line
GCSF mAb	M18612GC1	10-7910	GCSF mAb	M18612GC2	10-7911	For use in sandwich immunoassay
GCSF mAb	M18612GC3	10-7912	GCSF mAb	M18612GC4	10-7913	For use in sandwich immunoassay
hCG alpha pAb		70R-7561	TSH beta pAb		70R-7554	Matched pair for immunoassays
hCG beta mAb	M94138	10-C25D	hCG beta mAb	M94140	10-C25B	Excellent for quantitative assay that requires a wide dynamic range
hCG mAb	M1202082	10-3127	hCG mAb	M1202081	10-3126	Suitable pairing for Lateral Flow
hCG mAb	M1202081	10-3126	hCG mAb	M1202082	10-3127	Suitable pairing for ELISA
hCG beta protein		30-AC50				>98% by SDS-PAGE
NSE mAb	M12619NS1	10-N121A	NSE mAb	M18612NS1	10-7936	For use in sandwich immunoassay
NSE mAb	M18612NS2	10-7937	NSE mAb	M18612NS3	10-7938	For use in sandwich immunoassay
PAP mAb	M01010921	10-P45A	PAP mAb	M01010922	10-P45B	Good pair for ELISA and IRMA
PAP protein		30C-CP1016P				Prepared from human seminal fluid. >40% pure by SDS-PAGE
PAP protein		30C-CP1016				Prepared from human seminal fluid. >95% pure by SDS-PAGE
PSA mAb	M1202098	10-3143	PSA mAb	M1202097	10-3142	Suitable pairing for Lateral Flow. Can also be used in ELISA
PSA mAb	M701042	10-P20E	PSA mAb	M701041	10-P20D	This pair is utilized for a total PSA assay
PSA mAb	M612165	10-P21A	PSA mAb	M612166	10-P20A	This pair is utilized for the detection of free PSA
PSA mAb	M612152	10-P20B	PSA mAb	M612151	10-P22	This pair is utilized for the detection of complex PSA
PSA mAb	M18612PS1	10-7945	PSA mAb	M18612PS3	10-7947	For use in sandwich immunoassay
PSA mAb	M18612PS2	10-7946	PSA mAb	M18612PS3	10-7947	For use in sandwich immunoassay
PSA mAb	M12619PS1	10-P142A	PSA mAb	M18612PS4	10-7948	For use in sandwich immunoassay
PSA mAb	M18612PS5	10-7949	PSA mAb	M18612PS6	10-7950	For use in sandwich immunoassay
PSA pAb		70-XG69				Excellent for solid phase & conjugate. Suitable for IRMA, CLIA, ELISA
PSA protein		30C-CP1017P				Prepared from human seminal fluid. >40% pure by SDS-PAGE
PSA protein		30C-CP1017-1				Prepared from human seminal fluid. >95% pure by SDS-PAGE
PSA protein		30-AP14-1				No visible contaminants by SDS-PAGE
PSA protein		30-AP15E				Hydrolyzes synthetic peptide substrate MeO-Suc-Arg-Pro-Tyr-NH-Np
PSA/ACT complex protein		30C-CP1097				PSA from human seminal fluid; ACT from human plasma
S100 mAb	M18612S	10-7961	S100 mAb	M12619S1	10-S100A	For use in sandwich immunoassay
S100 mAb	M12619S2	10-S100B	S100 mAb	M12619S1	10-S100A	For use in sandwich immunoassay
TNF alpha mAb	M12619T1	10-T131A	TNF alpha mAb	M12619T2	10-T131C	For use in sandwich immunoassay

■ Matched Pairs

\* Can be used as capture and detection antibody

## Animal Serum & Red Blood Cells

Product Name	Catalog #	Comments	Size
<b>Bovine</b>			
Bovine Red Blood Cells	88R-B002	Glutaraldehyde-stabilized freshly prepared Bovine Red Blood Cells	20 ml
Calf Serum (Sterile Filtered)	88-NC10	Sterile Filtered Calf Serum	100 ml
FBS Liquid Media	88-NB05	Fetal Bovine Serum	100 ml
Normal Bovine Serum	88R-B001	Control Normal Bovine Serum	100 ml
Normal Bovine Serum (Protease/IgG free)	88R-1011	Normal Bovine Serum which has been lipid extracted and dialyzed against 10 mM Sodium Phosphate, 0.15 M Sodium Chloride, pH 7.2	2 ml
Normal Bovine Serum (Protease/IgG free)	88R-1012	Normal Bovine Serum which has been lipid extracted and dialyzed against 10 mM Sodium Phosphate, 0.15 M Sodium Chloride, pH 7.2	10 ml
<b>Cat</b>			
Normal Cat Serum	88R-1025	Normal Cat Serum which has been lipid extracted and dialyzed against 10 mM Sodium Phosphate, 0.15 M Sodium Chloride, pH 7.2	2 ml
Normal Cat Serum	88R-1026	Normal Cat Serum which has been lipid extracted and dialyzed against 10 mM Sodium Phosphate, 0.15 M Sodium Chloride, pH 7.2	10 ml
<b>Chicken</b>			
Chicken Red Blood Cells	88R-C001	Washed and freshly prepared 10% suspension of Chicken Red Blood Cells	20 ml
Chicken Red Blood Cells	88R-C002	Glutaraldehyde-stabilized freshly prepared Chicken Red Blood Cells	25 ml
Normal Chicken Serum	88R-1013	Normal Chicken Serum which has been lipid extracted and dialyzed against 10 mM Sodium Phosphate, 0.15 M Sodium Chloride, pH 7.2	2 ml
Normal Chicken Serum	88R-1014	Normal Chicken Serum which has been lipid extracted and dialyzed against 10 mM Sodium Phosphate, 0.15 M Sodium Chloride, pH 7.2	10 ml
<b>Dog</b>			
Dog Red Blood Cells	88R-D004	Glutaraldehyde-stabilized freshly prepared Dog Red Blood Cells	10 ml
Normal Dog Serum	88R-1027	Normal Dog Serum which has been lipid extracted and dialyzed against 10 mM Sodium Phosphate, 0.15 M Sodium Chloride, pH 7.2	2 ml
Normal Dog Serum	88R-1028	Normal Dog Serum which has been lipid extracted and dialyzed against 10 mM Sodium Phosphate, 0.15 M Sodium Chloride, pH 7.2	10 ml
Normal Dog Serum	88R-D005	Control Normal Dog Serum	50 ml
Normal Dog Serum	88-NC25	Control Normal Dog Serum	100 ml
<b>Donkey</b>			
Donkey Plasma	88R-D002	Control Donkey Plasma	100 ml
Normal Donkey Serum	88R-D003	Control Normal Donkey Serum	10 ml
Normal Donkey Serum	88R-D001	Control Normal Donkey Serum	50 ml
Normal Donkey Serum	88R-1021	Normal Donkey Serum which has been lipid extracted and dialyzed against 10 mM Sodium Phosphate, 0.15 M Sodium Chloride, pH 7.2	2 ml
Normal Donkey Serum	88R-1022	Normal Donkey Serum which has been lipid extracted and dialyzed against 10 mM Sodium Phosphate, 0.15 M Sodium Chloride, pH 7.2	10 ml
<b>Goat</b>			
Goat Red Blood Cells	88R-G003	Glutaraldehyde-stabilized freshly prepared Goat Red Blood Cells	20 ml
Normal Goat Serum	88-NG225	Control Normal Goat Serum	500 ml
Normal Goat Serum	88-NG22	Control Normal Goat Serum	500 ml
Normal Goat Serum	88R-1005	Normal Goat Serum which has been lipid extracted and dialyzed against 10 mM Sodium Phosphate, 0.15 M Sodium Chloride, pH 7.2	2 ml
Normal Goat Serum	88R-1006	Normal Goat Serum which has been lipid extracted and dialyzed against 10 mM Sodium Phosphate, 0.15 M Sodium Chloride, pH 7.2	10 ml
Normal Goat Serum	88R-NG001	Normal Goat Serum for use as a control or blocking reagent	50 ml

## Animal Serum & Red Blood Cells

Product Name	Catalog #	Comments	Size
<b>Guinea Pig</b>			
Guinea Pig Red Blood Cells	88R-G002	Washed and freshly prepared 10% suspension of Guinea Pig Red Blood Cells	25 ml
Guinea Pig Red Blood Cells	88R-P001	Glutaraldehyde-stabilized freshly prepared Guinea Pig Red Blood Cells	15 ml
Normal Guinea Pig Serum	88-NP25	Normal Guinea Pig Serum	50 ml
Normal Guinea Pig Serum	88R-1015	Normal Guinea Pig Serum which has been lipid extracted and dialyzed against 10 mM Sodium Phosphate, 0.15 M Sodium Chloride, pH 7.2	2 ml
Normal Guinea Pig Serum	88R-1016	Normal Guinea Pig Serum which has been lipid extracted and dialyzed against 10 mM Sodium Phosphate, 0.15 M Sodium Chloride, pH 7.2	5 ml
<b>Hamster</b>			
Hamster Red Blood Cells	88R-H003	Washed and freshly prepared 10% suspension of Hamster Red Blood Cells	10 ml
Hamster Red Blood Cells	88R-H001	Glutaraldehyde-stabilized freshly prepared Hamster Red Blood Cells	5 ml
Normal Syrian Hamster Serum	88R-1017	Normal Syrian Hamster Serum which has been lipid extracted and dialyzed against 10 mM Sodium Phosphate, 0.15 M Sodium Chloride, pH 7.2	2 ml
Normal Syrian Hamster Serum	88R-1018	Normal Syrian Hamster Serum which has been lipid extracted and dialyzed against 10 mM Sodium Phosphate, 0.15 M Sodium Chloride, pH 7.2	5 ml
<b>Horse</b>			
Horse Red Blood Cells	88R-H002	Glutaraldehyde-stabilized freshly prepared Horse Red Blood Cells	20 ml
Normal Horse Serum	88-NE21	Control Normal Horse Serum	100 ml
Normal Horse Serum	88R-1019	Normal Horse Serum which has been lipid extracted and dialyzed against 10 mM Sodium Phosphate, 0.15 M Sodium Chloride, pH 7.2	2 ml
Normal Horse Serum	88R-1020	Normal Horse Serum which has been lipid extracted and dialyzed against 10 mM Sodium Phosphate, 0.15 M Sodium Chloride, pH 7.2	10 ml
<b>Monkey</b>			
Monkey Red Blood Cells	88R-M003	Glutaraldehyde-stabilized freshly prepared Monkey Red Blood Cells	5 x 2 ml
<b>Mouse</b>			
Mouse Red Blood Cells	88R-M001	Washed and freshly prepared 10% suspension of Mouse Red Blood Cells	10 ml
Mouse Red Blood Cells	88R-M004	Glutaraldehyde-stabilized freshly prepared Mouse Red Blood Cells	10 ml
Normal Mouse Serum	88-NM35	Normal Mouse Serum	50 ml
Normal Mouse Serum	88R-M002	Control Normal Mouse Serum	50 ml
Normal Mouse Serum	88R-1001	Normal Mouse Serum which has been lipid extracted and dialyzed against 10 mM Sodium Phosphate, 0.15 M Sodium Chloride, pH 7.2	2 ml
Normal Mouse Serum	88R-1002	Normal Mouse Serum which has been lipid extracted and dialyzed against 10 mM Sodium Phosphate, 0.15 M Sodium Chloride, pH 7.2	5 ml
<b>Pig</b>			
Pig Red Blood Cells	88R-P002	Glutaraldehyde-stabilized freshly prepared Pig Red Blood Cells	20 ml
Pig Plasma	88R-P003	Control Pig Plasma	1 liter
Normal Pig Serum	88R-P004	Control Normal Pig Serum	1000 ml
Normal Pig Serum	88R-1023	Normal Pig (Swine) Serum which has been lipid extracted and dialyzed against 10 mM Sodium Phosphate, 0.15 M Sodium Chloride, pH 7.2	2 ml
Normal Pig Serum	88R-1024	Normal Pig (Swine) Serum which has been lipid extracted and dialyzed against 10 mM Sodium Phosphate, 0.15 M Sodium Chloride, pH 7.2	10 ml
<b>Rabbit</b>			
Rabbit Red Blood Cells	88R-R001	Glutaraldehyde-stabilized freshly prepared Rabbit Red Blood Cells	20 ml
Normal Rabbit Serum	88-NR50	Normal Rabbit Serum	100 ml
Normal Rabbit Serum	89R-RM002	Normal Rabbit Serum (Mouse cell adsorbed)	5 ml
Normal Rabbit Serum	89R-RR002	Normal Rabbit Serum (Rat cell adsorbed)	5 ml



## Animal Serum & Red Blood Cells

Product Name	Catalog #	Comments	Size
Normal Rabbit Serum	89R-RM001	Normal Rabbit Serum (Mouse cell adsorbed)	20 mg
Normal Rabbit Serum	89R-RR001	Normal Rabbit Serum (Rat cell adsorbed)	20 mg
Normal Rabbit Serum	88R-1003	Normal Rabbit Serum which has been lipid extracted and dialyzed against 10 mM Sodium Phosphate, 0.15 M Sodium Chloride, pH 7.2	2 ml
Normal Rabbit Serum	88R-1004	Normal Rabbit Serum which has been lipid extracted and dialyzed against 10 mM Sodium Phosphate, 0.15 M Sodium Chloride, pH 7.2	10 ml
<b>Rat</b>			
Rat Red Blood Cells	88R-R005	Washed and freshly prepared 10% suspension of Rat Red Blood Cells	25 ml
Rat Red Blood Cells	88R-R002	Glutaraldehyde-stabilized freshly prepared Rat Red Blood Cells	10 ml
Rat Macrophages	88R-R006	Freshly prepared Rat Macrophages isolated from lymphoid organs	1 vial
Normal Rat Serum	88-NR51	Normal Rat Serum	50 ml
Normal Rat Serum	88R-1009	Normal Rat Serum which has been lipid extracted and dialyzed against 10 mM Sodium Phosphate, 0.15 M Sodium Chloride, pH 7.2	2 ml
Normal Rat Serum	88R-1010	Normal Rat Serum which has been lipid extracted and dialyzed against 10 mM Sodium Phosphate, 0.15 M Sodium Chloride, pH 7.2	5 ml
<b>Sheep</b>			
Sheep Red Blood Cells	88R-S001	Washed and freshly prepared 10% suspension of Sheep Red Blood Cells	100 ml
Sheep Red Blood Cells	88R-S003	Glutaraldehyde-stabilized freshly prepared Sheep Red Blood Cells	20 ml
Sheep Red Blood Cells	20R-RS001	Human IgG Sensitized Glutaraldehyde Stabilized Sheep Red Blood Cells	10 ml
Sheep Red Blood Cells	88R-S004	Glutaraldehyde-stabilized freshly prepared albumin sensitized Sheep Red Blood Cells	10 ml
Sheep Red Blood Cells	88R-S005	Glutaraldehyde-stabilized freshly prepared tanned Sheep Red Blood Cells	10 ml
Normal Sheep Serum	88-NS55	Normal Sheep Serum	100 ml
Normal Sheep Serum	88R-S002	Control Normal Sheep Serum	50 ml
Normal Sheep Serum	88R-1007	Normal Sheep Serum which has been lipid extracted and dialyzed against 10 mM Sodium Phosphate, 0.15 M Sodium Chloride, pH 7.2	2 ml
Normal Sheep Serum	88R-1008	Normal Sheep Serum which has been lipid extracted and dialyzed against 10 mM Sodium Phosphate, 0.15 M Sodium Chloride, pH 7.2	10 ml
<b>Turkey</b>			
Turkey Red Blood Cells	88R-T001	Glutaraldehyde-stabilized freshly prepared Turkey Red Blood Cells	20 ml

## Blocking Reagents

Product Name	Catalog #	Comments	Size
BSA (Heat Shock)	30-AB71	Standard Grade Heat Shock Bovine Serum Albumin	1 kg
BSA (Protease free)	30-AB74S	Protease free Bovine Serum Albumin	1 kg
BSA (Protease free)	30-AB74	Protease free Bovine Serum Albumin	1 kg
BSA (Reagent Grade)	30-AB79	Reagent Grade Bovine Serum Albumin (99% pure)	1 kg
BSA (Reagent Grade)	30-AB81	Reagent Grade Bovine Serum Albumin (99% pure)	200 gram
BSA (Standard Grade)	30-AB70	Standard Grade Bovine Serum Albumin (99% pure)	1 kg
BSA Cohn Fraction V (Microbiological Grade)	30-AB80	Microbiological Grade Bovine Serum Albumin, Cohn Fraction V, (99% pure)	1 kg
BSA Control for AGE-BSA	35R-AA007	BSA Control for AGE protein (BSA modified), Cat No. 30R-AA007	10 mg
BSA Fraction V	30-AB75	Standard Grade Bovine Serum Albumin, Cohn Fraction V, (99% pure)	1 kg
BSA Fraction V (10% solution)	30R-AB022	Bovine Serum Albumin, Cohn Fraction V 10% solution	10 ml
BSA powder (Reagent Grade)	30-AB73	Reagent Grade Bovine Serum Albumin (99% pure)	1 kg
HAMA blocking reagent	85R-1001	For use in immunoassays such as ELISA	mg/gram
HAMA blocking reagent	85R-1003	For use in immunoassays such as Rapid Tests	mg/gram
HAMA blocking reagent	85R-1012	For use in assays using a mouse monoclonal and goat polyclonal pair	mg/gram
HAMA blocking reagent	85R-1013	For use in assays using a mouse monoclonal and goat polyclonal pair	mg/gram
HAMA blocking reagent	85R-1014	For use in assays specific for clinical false positive samples	mg/gram
HAMA ELISA kit	55R-IDC14	ELISA kit for the detection of HAMA in the research laboratory	96 tests
Mouse IgG	31-AM15	Purified Mouse IgG in lyophilized format for use as a blocking reagent	10 mg
Mouse IgG	31-AM15S	Purified Mouse IgG in liquid format for use as a blocking reagent	10 mg

## Diluents

Product Name	Catalog #	Applications/Comments	Size
Alkaline Phosphatase Conjugate Stabilizer	85R-101	Stabilizer for AP conjugates in ELISA	1 liter
Avidin-HRP	85R-1009	For use in Flow Cytometry	1 ml
Avidin-HRP	85R-1009	For use in Flow Cytometry	500 ul
Binding/Coating Buffer (10X)	85R-124	ELISA buffer	100 ml
Casein Buffer (20X-4X)	85R-107	Biotin free and IgG free	100 ml
Casein Buffer (20X-4X)	85R-110	IgG free	100 ml
Casein Colloid (5% Solution)	85R-109	Used as blocking reagent in immunoassays	100 ml
Chicken IgY precipitation reagent	85R-1010	For use in immunoassays	4 ml
Evans Blue diluent	85-E09	For use in IF staining	3 ml
Fraction V BSA 10% solution	30R-AB022	Used as blocking reagent in immunoassays	10 ml
HA tag precipitation reagent	85R-1011	For use in immunoassays	4 ml
HDL2 + HDL3 Precipitation Reagent	85R-106	High density lipoprotein precipitation reagent	50 ml
High Performance ELISA Buffer	85R-105	For high sensitivity ELISA assays	55 ml
Homocysteine controls	85R-1006	For use as control in cardiac diagnostic assays	1 set
HRP Conjugate Stabilizer	85R-102	Stabilization buffer for antibody HRP conjugates	1 liter
HRP Diluent	85-H10	Dilution buffer for antibody HRP conjugates	250 ml
Immunoassay Stabilizer	85R-103	ELISA stabilizer	1 liter
Lysis buffer	85R-1005	For use in ELISA, IP, WB	50 ml
PBS (10X Concentrate)	85R-125	Use as a dilution buffer in multiple applications	100 ml
RF Absorbent	85R-1008	For use in ELISA	20 ml
RF Adsorbent	85R-1007	For use in ELISA	1 ml
Stabilizing Buffer (BSA based)	85R-115	Drying Buffer/Stabilizer, biotin-free	100 ml
Stabilizing Buffer (Casein based)	85R-116	Drying Buffer/Stabilizer, biotin-free	100 ml
Stop/Elution Solution	85R-123	For use in ELISA	100 ml
Substrate Buffer (10X Concentrate)	85R-127	For use with TMB in ELISA	100 ml
TMB Substrate	85R-121	High sensitivity immunoassays in 3D-IF format	30 ml
TMB Substrate	85R-122	For use in microarray applications	30 ml
TMB Substrate	85R-118	High sensitivity TMB Substrate for use in ELISA	30 ml
TMB Substrate	85R-120	Western/Northern/Southern/Dot Blots & IHC	30 ml
TMB Substrate	85R-117	For use in blotting and immunoassays in 3D-IF format	30 ml
TMB Weakener	85R-119	Use for dilution of TMB substrate	1 liter
Universal Casein Diluent/Blocker	85R-108	Biotin free reagent for blocking ELISA plates	1 liter
Universal Casein Diluent/Blocker	85R-108	Biotin free reagent for blocking ELISA plates	100 ml
Wash Buffer (10X Concentrate)	85R-126	ELISA wash buffer	100 ml

## Poly-HRP Products

Product Name	Catalog #	Comments	Size
Aminoethyl Poly-HRP40	30R-AA034	Aminoethyl-PolyHRP40, aminoethylated derivative of PolyHRP40	5 mg
Antibody/Antigen Conjugate Diluent/Blocker (Poly-HRP)	85R-111	Diluent buffer/blocker for use in Poly-HRP enhanced enzymatic labelling of antibodies and antigens	100 ml
Antibody/Antigen Conjugate Stabilizer (Poly-HRP)	85R-113	Stabilization buffer for use in Poly-HRP enhanced enzymatic labelling of antibodies and antigens	100 ml
Antibody/Antigen Conjugate Stabilizer (Poly-HRP)	85R-114	Stabilization buffer for use in Poly-HRP enhanced enzymatic labelling of antibodies and antigens	100 ml
Goat anti Mouse IgG (H + L) (Poly-HRP40)	43R-IG101PH	Poly-HRP labelled antibody for secondary detection of mouse primary antibodies	1 mg
Goat anti Mouse IgG (H + L) (Poly-HRP40)	43R-IG163PH	Poly-HRP labelled antibody for secondary detection of mouse primary antibodies	50 ug
Goat anti Rabbit IgG (H + L) (Poly-HRP40)	43R-IG096PHRP	Poly-HRP labelled antibody for secondary detection of rabbit primary antibodies	1 mg
Goat anti Rabbit IgG (H + L) (Poly-HRP40)	43R-IG164PH	Poly-HRP labelled antibody for secondary detection of rabbit primary antibodies	50 ug
High Load Streptavidin-PolyHRP Conjugate	85R-202	Enables signal amplification and detection of biotinylated antibodies	1 ml
Mouse anti Human IgG (Poly-HRP)	61R-I165AHRP40	Poly-HRP labelled antibody for direct detection of human IgG	1 mg
Mouse anti Human IgG (Poly-HRP)	61R-I166AHRP40	Poly-HRP labelled antibody for direct detection of human IgG	50 ug
Mouse anti Human IgG (Poly-HRP) Fab'2	61R-I164AHRP40	Poly-HRP labelled antibody for direct detection of human IgG	500 ug
Mouse anti Human IgG (Poly-HRP80)	43R-MIGHRP80	Poly-HRP labelled antibody for direct detection of human IgG	1 mg
Mouse anti Human IgM (Poly-HRP)	61R-I163AHRP40	Poly-HRP labelled antibody for direct detection of human IgM	1 ml
Mouse IgG (H + L) Poly-HRP Blotting Developer Kit	55R-GAMPBLOT	Complete kit for development of Mouse IgG Poly-HRP blots	1 kit
Protein A/G-Poly-HRP40	65R-P102	Protein A & G conjugated to Poly-HRP for use in immunoassays	1 mg
Protein A-Poly-HRP Blotting Developer Kit	55R-APBLOT	Complete kit for development of Protein A Poly-HRP blots	1 kit
Protein A-Poly-HRP20	65R-P100	Protein A conjugated to Poly-HRP for use in immunoassays	1 mg
Protein A-Poly-HRP20	65R-P103	Protein A conjugated to Poly-HRP for use in immunoassays	50 ug
Protein A-Poly-HRP40	65R-P101	Protein A conjugated to Poly-HRP for use in immunoassays	1 mg
Protein A-Poly-HRP40	65R-P104	Protein A conjugated to Poly-HRP for use in immunoassays	50 ug
Rabbit IgG (H + L) Poly-HRP Blotting Developer Kit	55R-GARPBLOT	Complete kit for development of Rabbit IgG Poly-HRP blots	1 kit
Streptavidin Poly-HRP (+ 100ml PHRPX)	55R-PHRPX-SA	For signal amplification and detection of biotinylated antibodies in ELISA and WB	1 pack
Streptavidin Poly-HRP Blotting Starter Kit	55R-SPBLOT	Starter kit for development of Streptavidin Poly-HRP blots	1 kit
Streptavidin Poly-HRP Conjugate	85R-200	For signal amplification and detection of biotinylated antibodies in ELISA and WB	0.10 ml
Streptavidin Poly-HRP Conjugate	85R-201	For signal amplification and detection of biotinylated antibodies in ELISA and WB	1.0 ml
Streptavidin Poly-HRP Conjugate Stabilizer	85R-112	Stabilization buffer for use with Streptavidin Poly-HRP conjugates	100 ml
Streptavidin Poly-HRP Conjugate Stabilizer	85R-104	Stabilization buffer for use with Streptavidin Poly-HRP conjugates	1 liter
Streptavidin Poly-HRP Conjugate Stabilizer	85R-104	Stabilization buffer for use with Streptavidin Poly-HRP conjugates	500 ml
Streptavidin Poly-HRP ELISA Developer Kit	55R-START2	Complete kit for development of Streptavidin Poly-HRP ELISA	1 kit
Streptavidin Poly-HRP ELISA Developer Kit	55R-START3D10	Complete kit for development of Streptavidin Poly-HRP ELISA	1 kit
Streptavidin Poly-HRP ELISA Developer Kit	55R-START3D2	Complete kit for development of Streptavidin Poly-HRP ELISA	1 kit
Streptavidin Poly-HRP ELISA Developer Kit	55R-START3D50	Complete kit for development of Streptavidin Poly-HRP ELISA	1 kit
Streptavidin Poly-HRP ELISA Starter Kit	55R-START01	Starter kit for development of Streptavidin Poly-HRP ELISA	1 kit
Streptavidin Poly-HRP ELISA Starter Kit	55R-START1	Starter kit for development of Streptavidin Poly-HRP ELISA	1 kit
Streptavidin Poly-HRP20 Conjugate	65R-S103PHRP	For signal amplification and detection of biotinylated antibodies in ELISA and WB	1 mg
Streptavidin Poly-HRP20 Conjugate	65R-S103PHRP	For signal amplification and detection of biotinylated antibodies in ELISA and WB	200 ug
Streptavidin Poly-HRP20 Conjugate	65R-S108	For signal amplification and detection of biotinylated antibodies in ELISA and WB	50 ug
Streptavidin Poly-HRP20 Conjugate	65R-S109	For signal amplification and detection of biotinylated antibodies in ELISA and WB	50 ug
Streptavidin Poly-HRP20 Conjugate	65R-S110	For signal amplification and detection of biotinylated antibodies in ELISA and WB	25 ug



## Poly-HRP Products

Product Name	Catalog #	Comments	Size
Streptavidin Poly-HRP20 Conjugate	65R-S111	For signal amplification and detection of biotinylated antibodies in ELISA and WB	25 ug
Streptavidin Poly-HRP20 Conjugate	65R-S106	For signal amplification and detection of biotinylated antibodies in ELISA and WB	50 ug
Streptavidin Poly-HRP20 Conjugate	65R-S107	For signal amplification and detection of biotinylated antibodies in ELISA and WB	50 ug
Streptavidin Poly-HRP40 Conjugate	65R-S104PHRP	For signal amplification and detection of biotinylated antibodies in ELISA and WB	1 mg
Streptavidin Poly-HRP40 Conjugate	65R-S104PHRP	For signal amplification and detection of biotinylated antibodies in ELISA and WB	100 ug
Streptavidin Poly-HRP40 Conjugate	65R-S114	For signal amplification and detection of biotinylated antibodies in ELISA and WB	50 ug
Streptavidin Poly-HRP40 Conjugate	65R-S115	For signal amplification and detection of biotinylated antibodies in ELISA and WB	50 ug
Streptavidin Poly-HRP40 Conjugate	65R-S116	For signal amplification and detection of biotinylated antibodies in ELISA and WB	25 ug
Streptavidin Poly-HRP40 Conjugate	65R-S117	For signal amplification and detection of biotinylated antibodies in ELISA and WB	25 ug
Streptavidin Poly-HRP40 Conjugate	65R-S112	For signal amplification and detection of biotinylated antibodies in ELISA and WB	50 ug
Streptavidin Poly-HRP40 Conjugate	65R-S113	For signal amplification and detection of biotinylated antibodies in ELISA and WB	50 ug
Streptavidin Poly-HRP40 Conjugate (DY547)	65R-S127	For signal amplification and detection of biotinylated antibodies in ELISA and WB	1 mg
Streptavidin Poly-HRP40 Conjugate (DY647)	65R-S128	For signal amplification and detection of biotinylated antibodies in ELISA and WB	1 mg
Streptavidin Poly-HRP80 Conjugate	65R-S105PHRP	For signal amplification and detection of biotinylated antibodies in ELISA and WB	1 mg
Streptavidin Poly-HRP80 Conjugate	65R-S105PHRP	For signal amplification and detection of biotinylated antibodies in ELISA and WB	100 ug
Streptavidin Poly-HRP80 Conjugate	65R-S120	For signal amplification and detection of biotinylated antibodies in ELISA and WB	50 ug
Streptavidin Poly-HRP80 Conjugate	65R-S121	For signal amplification and detection of biotinylated antibodies in ELISA and WB	50 ug
Streptavidin Poly-HRP80 Conjugate	65R-S122	For signal amplification and detection of biotinylated antibodies in ELISA and WB	25 ug
Streptavidin Poly-HRP80 Conjugate	65R-S123	For signal amplification and detection of biotinylated antibodies in ELISA and WB	25 ug
Streptavidin Poly-HRP80 Conjugate	65R-S118	For signal amplification and detection of biotinylated antibodies in ELISA and WB	50 ug
Streptavidin Poly-HRP80 Conjugate	65R-S119	For signal amplification and detection of biotinylated antibodies in ELISA and WB	50 ug







Fitzgerald Industries International  
30 Sudbury Road, Suite 1A North  
Acton, MA 01720  
USA

T 800.370.2222 or 978.371.6446

F 978.371.2266

Email: [antibodies@fitzgerald-fii.com](mailto:antibodies@fitzgerald-fii.com)



北京市昌平区回龙观西大街35号院1号楼811室 102208

Tel: +86 10 5701 7625 / 5701 8690 / 5701 8691

MP: +86 136 4103 4192 / 156 1198 2246

FAX: +86 10 5645 1610

Mail: [info@bj-life-science.com](mailto:info@bj-life-science.com)

[www.bj-life-science.com](http://www.bj-life-science.com)

[www.fitzgerald-fii.com](http://www.fitzgerald-fii.com)